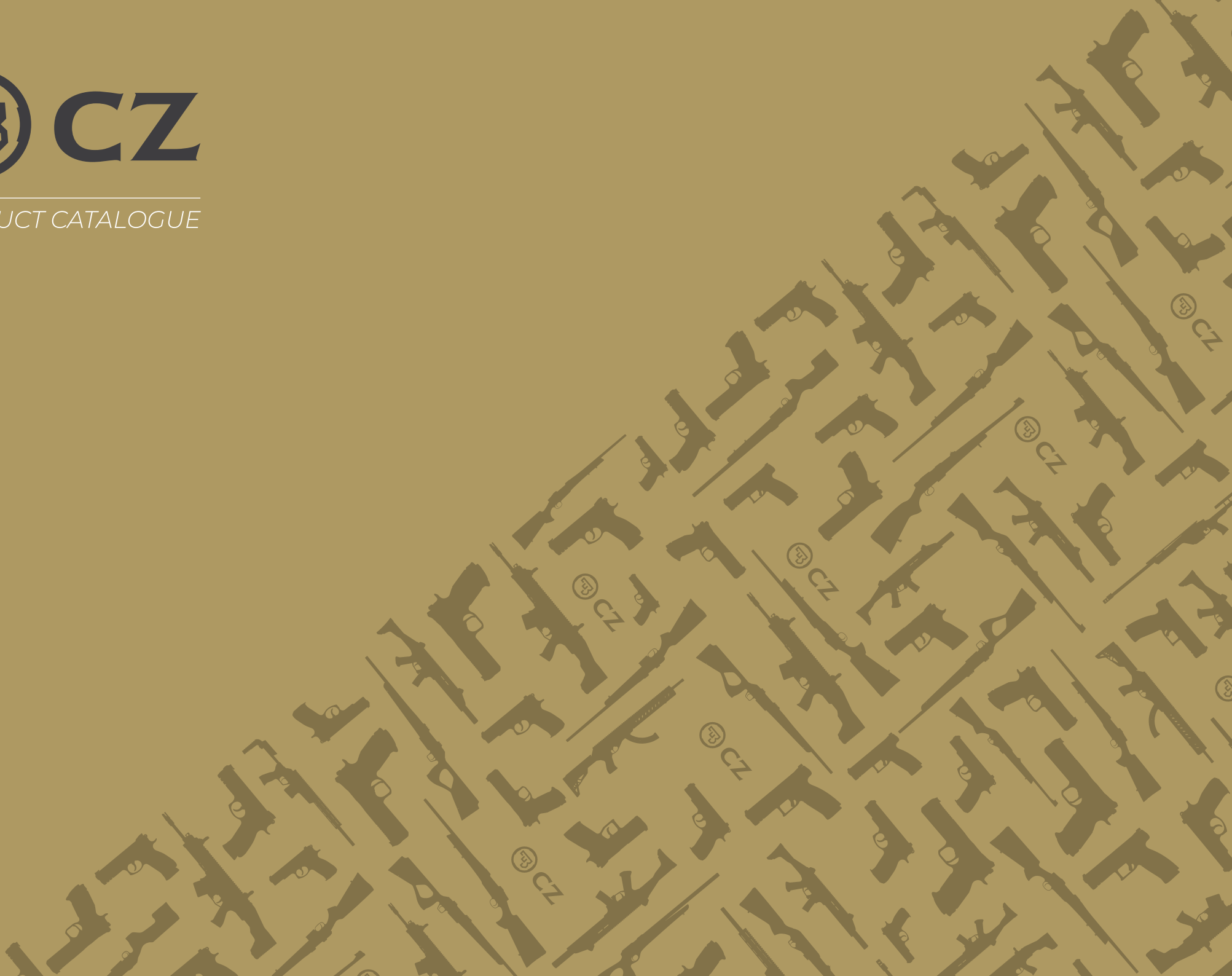




PRODUCT CATALOGUE



**WE DISTRIBUTE OUR PRODUCTS  
TO MORE THAN 100 COUNTRIES  
AROUND THE WORLD**



**Scan to find**  
the nearest CZ dealer,  
store or service center.

The technical specifications provided are for orientation purposes only and may vary according to the specific configuration. The manufacturer reserves the right to make changes or modifications at its sole discretion.

## CONTENTS

<b>PISTOLS</b>	<b>6</b>
CZ SHADOW 2 SERIES	10
CZ TS 2 SERIES	24
CZ 75 SERIES	32
CZ P-10 SERIES	34
CZ P-07/09 SERIES	46
ADAPTERS KADET	52
<b>CENTERFIRE RIFLES</b>	<b>56</b>
CZ 600 SERIES	58
CZ TSR	72
<b>RIMFIRE RIFLES</b>	<b>82</b>
CZ 457 SERIES	84
<b>SHOTGUNS</b>	<b>106</b>
CZ-USA FIELD SPORTS SERIES	108
<b>SEMI-AUTOMATIC RIFLES / CARBINES</b>	<b>112</b>
CZ SCORPION EVO 3 S1 SERIES	114
CZ BREN 2 Ms SERIES	120
<b>ACCESSORIES</b>	<b>128</b>

"THE MOMENT YOU HOLD A CZ GUN IN YOUR HAND YOU EXPERIENCE AN INTUITIVE, FAMILIAR CONNECTION. A CONNECTION THAT SEEMS SMOOTH AND WELL KNOWN, LIKE MEETING AN OLD FRIEND. A CONNECTION THAT GIVES YOU ASSURANCE, CALMNESS AND A STEADY HAND TO SUCCESSFULLY PERFORM IN ANY SITUATION.

THIS CONNECTION AND THE DESIGN OF OUR GUNS ALLOWS THEM TO FIT WITH EVERY TASK AND MISSION. BE IT SPORT SHOOTING, HUNTING, MILITARY SERVICE OR LAW ENFORCEMENT, OUR FIREARMS ARE DEVELOPED TO HELP YOU SUCCEED.

THAT IS WHAT YOU GET FROM CZ. A GUN WITH INTUITIVE AND NATURAL HANDLING PRECISELY FIT FOR A GIVEN PURPOSE."



***Dear Customers, Business Partners  
and Supporters of the CZ brand,***

Welcome to our product catalogue – a world of innovation, shooting comfort and leading expertise.

Ceska zbrojovka is one of the main pillars of the international Colt CZ Group, which is among the world's leading manufacturers of small arms, ammunition and munitions for the armed forces, self-defense, hunting, sport shooting and other commercial applications.

Shared know-how, mutual synergy and common values are key factors that have contributed to the success of CZ and the entire Colt CZ Group. Our goal is to provide users with a modern and high-quality range of firearms that combine advanced ergonomics with the highest level of performance and reliability.

Within the pages of this catalogue are many interesting innovations that we are excited to show you. Among the most important are the optics-ready CZ SHADOW 2 COMPACT pistol, the ultra-compact CZ SCORPION EVO 3 S2 MICRO pistol caliber carbine, the technologically groundbreaking CZ 457 CARBON rimfire rifle and the CZ 600 AMERICAN centerfire hunting rifle with a high-quality wood stock optimized for shooting with a riflescope.

Thank you for your continued support and may you have lots of luck in the choice of your new CZ gun. And if this is your very first firearm, I am honored to welcome you to the ever-expanding circle of customers and supporters of the CZ brand!



*Jan Zajic*  
CEO and Chairman of the Board of Directors  
Ceska zbrojovka





## PISTOLS

CZ leads the world with a comprehensive line of advanced pistols that sees continuous innovation and expansion of models. We have an ideal firearm for everyone. All categories are covered, from supercompacts to full-size models and sport specials. Pistols within the different series are made from both traditional and modern, cutting edge materials with a selection of hammer-fired and striker-fired models. Keeping with the latest trends, selected models come ready for the installation of a suppressor and/or red dot sight.



## THE MOST POPULAR FIREARMS FOR COMPETING IN THE **IPSC** **PRODUCTION** DIVISION

The CZ SHADOW 2 series is a family of high performance, large-capacity steel pistols for today's dynamic sport shooting disciplines. Models within this series allow good shooters to perform extremely well and the best shooters to win the most prestigious IPSC competitions.

*Eric Grauffel,  
Nine-time IPSC World Champion,  
CZ Shooting Team,  
user of CZ SHADOW 2 ORANGE pistols*

# CZ **SHADOW 2** SERIES



# MAIN FEATURES OF THE CZ SHADOW 2 SERIES



Ergonomic, deep-seated grip for improved control during shooting



Height and side-to-side adjustable rear sight for easy aiming



Adjustable magazine release button for maximum reloading speeds



1mm fiber optic front sight ensures high visibility and speeds up precise aiming



120 mm cold hammer forged barrel

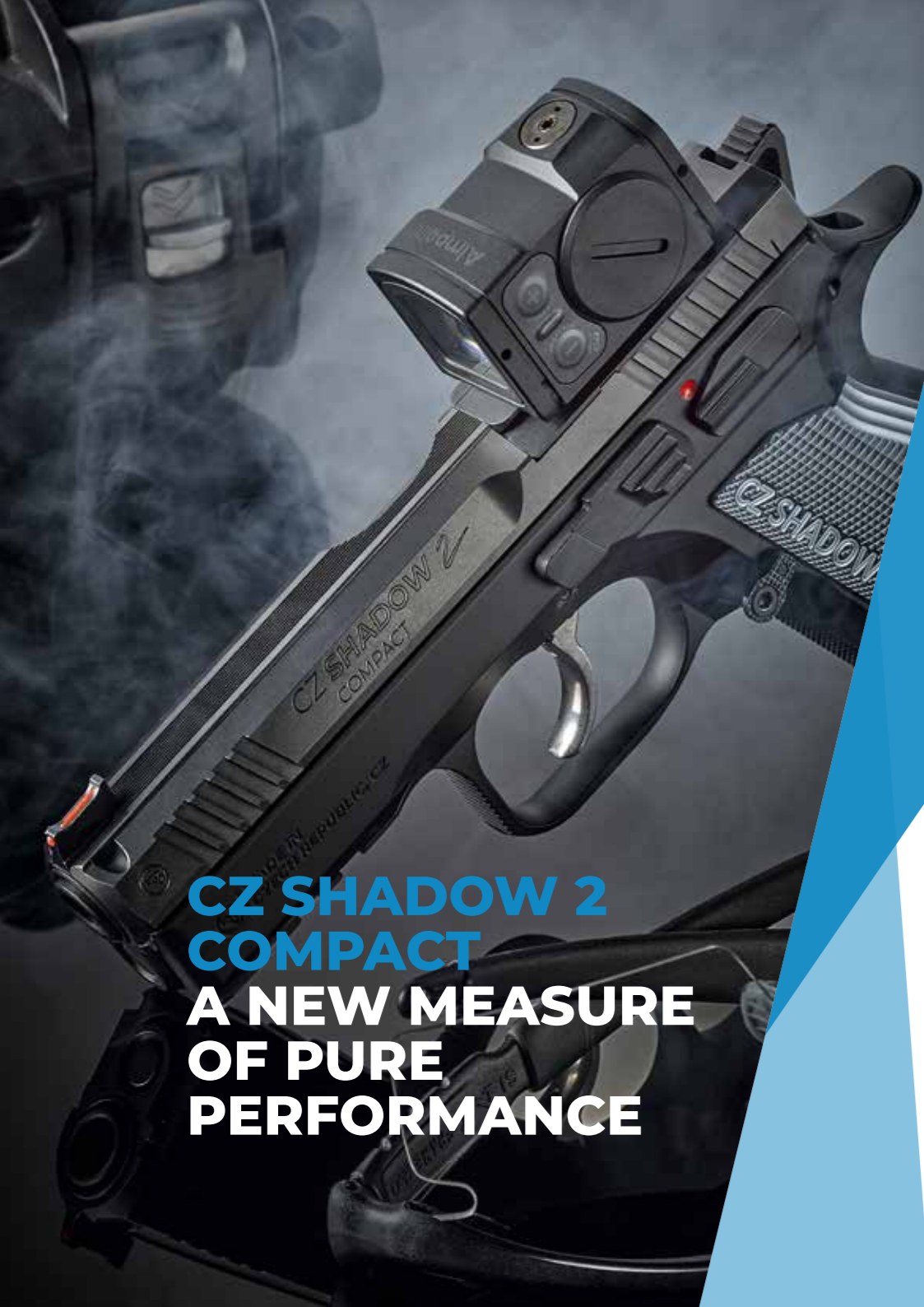


Extended left safety button also serves as thumb rest (CZ SHADOW 2 SA and CZ SHADOW 2 ORANGE)



Smooth trigger pull and shortened reset





## **CZ SHADOW 2 COMPACT**

### **A NEW MEASURE OF PURE PERFORMANCE**

**In its quest to put a world-class performer in the hands of shooters who want a sport pistol that's easier to handle and carry, CZ introduces the CZ SHADOW 2 COMPACT. A smaller, lighter, optics-ready version of CZ's full-size flagship SA/DA sport pistol – the CZ SHADOW 2.**

#### **DNA OF A WORLD CHAMPION**

Sport shooters around the world are familiar with the highly celebrated CZ SHADOW 2, a full-size sport pistol used by numerous IPSC competitors to win world championship titles in the Production and Production Optics divisions, such as nine-time IPSC world champion Eric Grauffel. Although a highly accurate and easy to handle pistol on the shooting range and in competitions, the larger dimensions and weight of a full-size steel frame did not make it a good choice

for all day carry. The new CZ SHADOW 2 COMPACT is a real game changer in addressing these carry concerns.

#### **A NEW KIND OF COMPACT**

CZ-USA Product Manager Rich Huff first came with the idea to create a compact version of the CZ SHADOW 2 in October 2021. His goal was to introduce a pistol on the market that would have the same world class design, accuracy, handling and controls as on the full-size CZ SHADOW 2, but in a smaller and lighter form factor. He wanted more shooters to have access to the highest performance CZ offers in its handguns while away from the shooting range and competitions.

Once CZ made the decision to move forward with this new model, the baton for its design and development was passed to one of CZ designers, Jiri Tichy. Tichy boldly took the reins and led the R&D team in making sure this new pistol would fully live up to the CZ SHADOW 2 name. Development was completed in May 2023 with a production trial run, followed by its worldwide release in August 2023.

Thanks to the active contributions of these two important figures, the CZ SHADOW 2 COMPACT was brought into the CZ portfolio

and is now available on the world market. Sadly, Huff passed away back in February 2022 at just 48 years old, so he did not live to see the completion of the project and the launch of this new model – but we are sure he would have loved it!

#### **INSTINCTIVE FIT**

Although the new CZ SHADOW 2 COMPACT is a smaller and much lighter version of the original, it retains the key competition-proven features, accuracy and handling that made its big brother so popular among elite sport shooters and contributed to its status as a world championship firearm. Its light, compact frame is forged from highly durable 7075 aluminum alloy, making it the perfect choice for all day carry, as well as concealed carry. With a butter smooth trigger and shortened reset, quick and accurate shots are a matter of course. The slide comes with two pairs of front and rear cocking serrations for slip-free cocking, and the rear of the slide is equipped with an extremely low and robust mounting interface for attachment of a CZ-designed red dot sight. In fact, its mounting interface is identical to what is found on the CZ SHADOW 2 OR model and is compatible with the same mounting plates. But even

without mounted optics, quick target acquisition is ensured by its highly visible red fiber optic front sight and height-adjustable rear sight, which can also be adjusted laterally. The advanced ergonomics of the CZ SHADOW 2 series are not lost on the CZ SHADOW 2 COMPACT, so you can look forward to the same extreme shooting comfort and control that has won many championships around the world. Both left- and right-handed shooters will be equally at home with handling, thanks to its ambidextrous manual safety and reduced height magazine release button that can be swapped from side-to-side. An accessory rail on its dust cover allows for the easy mounting of a light or other devices. Sophisticated checkering on the grey anodized front strap and duralumin grips ensure confident, slip-free handling.

#### **COMPETITION-PROVEN PERFORMANCE THAT IS ALWAYS CLOSE AT HAND**

With the release of the new CZ SHADOW 2 COMPACT, with its impressive 15+1 capacity, CZ gives all shooters the opportunity to have the full performance of its top shelf, championship series always within reach. All day, every day.



# CZ SHADOW 2 COMPACT

**NEW**



The CZ SHADOW 2 COMPACT is an ideal compact size pistol for users and fans of the CZ SHADOW 2. With a partial reduction in size, and a significant reduction in weight, it retains all of the key strengths of the series, which are led by the shooting comfort and accuracy that have made the CZ SHADOW 2 pistol a winner at the world's most prestigious championships. The CZ SHADOW 2 COMPACT is not only the perfect choice for sport shooting, but also for all-day carry, including concealed carry. Its range of use is further expanded with a mounting interface, compatible with CZ SHADOW 2 OR pistols, for attachment of a red dot sight.



**COMPACT  
LIGHT-WEIGHT  
PURE PERFORMANCE**

MODEL	CALIBER	MAGAZINE CAPACITY	WEIGHT with empty magazine (g)	DIMENSIONS L x W x H (mm)	BARREL LENGTH (mm)	SIGHTS	THREAD	TRIGGER PULL (N)	TRIGGER TRAVEL (mm)	TRIGGER RESET (mm)
CZ SHADOW 2 COMPACT	9 x 19	15	900	191 x 35 x 138	102	Fiber optic front sight, Checkered rear sight	-	SA: 15 DA: 46	SA: 3-4 DA: 5	3-4

FRAME	GRIPS	SAFETY FEATURES
Forged aluminum alloy	Duralumin	Manual safety, Safety notch on the hammer





## CZ SHADOW 2 OR

The CZ SHADOW 2 pistol is extremely fast, yet at some shooting stages, it can be even faster. How is that possible? By using today's compact red dot sights. The OR (Optics-Ready) model allows for their easy, exceptionally low and secure attachment.



## CZ SHADOW 2 SA

A target shooting model of the successful sports special with a single-action trigger mechanism and adjustable trigger designed to achieve the most accurate hits.

## CZ SHADOW 2

The CZ Shadow 2 is an all-steel, large-capacity SA | DA pistol that is currently the most celebrated firearm in today's dynamic sport disciplines. This model is used by winners of the most prestigious IPSC shooting competitions.



MODEL	CALIBER	MAGAZINE CAPACITY	WEIGHT with empty magazine (g)	DIMENSIONS L x W x H (mm)	BARREL LENGTH (mm)	SIGHTS	THREAD	TRIGGER PULL (N)	TRIGGER TRAVEL (mm)	TRIGGER RESET (mm)
CZ SHADOW 2	9 x 19	19 / 10	1330	217 x 34 x 157	120	Fiber optic front sight, Checkered rear sight	-	SA: 15 DA: 46	SA: 3-4 DA: 5	3-4
CZ SHADOW 2 OR	9 x 19	19	1330	217 x 34 x 157	120	Fiber optic front sight, Checkered rear sight	-	SA: 15 DA: 46	SA: 3-4 DA: 5	3-4
CZ SHADOW 2 SA	9 x 19	19	1330	217 x 42 x 157	120	Fiber optic front sight, Checkered rear sight	-	SA: 15	3-4	3-4

FRAME	GRIPS	SAFETY FEATURES
Steel	Duralumin	Manual safety, Safety notch on the hammer
Steel	Duralumin	Manual safety, Safety notch on the hammer
Steel	Duralumin	Manual safety, Safety notch on the hammer







PRODUCTION



**NEW**

## CZ SHADOW 2 ORANGE OR

An advanced, innovative sport pistol design that elevates your shooting experience and results in competitions to the highest level. The superb design base of this model has been further improved by precise gunsmithing modifications and the use of top-quality sport shooting components. A new feature is an extremely low and highly durable interface for mounting today's compact red dot sights.



**ERIC GRAUFFEL USED THE CZ SHADOW 2 TO WIN MULTIPLE TITLES IN THE PRODUCTION DIVISION:**

**WORLD CHAMPIONSHIP TITLE AT THE 2022 IPSC HANDGUN WORLD SHOOT IN PATTAYA, THAILAND**

**EUROPEAN CHAMPIONSHIP TITLE AT THE 2023 EUROPEAN HANDGUN CHAMPIONSHIP IN CORINTH, GREECE**



PRODUCTION



## CZ SHADOW 2 URBAN GREY

Traditional black is not the only color that suits sport. Our portfolio therefore includes a model whose frame is coated with a highly durable finish in the trendy and popular Urban Grey color scheme, which beautifully contrasts with the black aluminum grips.

MODEL	CALIBER	MAGAZINE CAPACITY	WEIGHT with empty magazine (g)	DIMENSIONS L x W x H (mm)	BARREL LENGTH (mm)	SIGHTS	THREAD	TRIGGER PULL (N)	TRIGGER TRAVEL (mm)	TRIGGER RESET (mm)	FRAME	GRIPS	SAFETY FEATURES
CZ SHADOW 2 ORANGE OR	9 x 19	19	1330	217 x 42 x 157	120	Fiber optic front sight, Checkered rear sight	-	SA: 15 DA: 46	SA: 3-4 DA: 5	3-4	Steel	Duralumin	Manual safety, Safety notch on the hammer
CZ SHADOW 2 URBAN GREY	9 x 19	19	1330	217 x 34 x 157	120	Fiber optic front sight, Checkered rear sight	-	SA: 15 DA: 46	SA: 3-4 DA: 5	3-4	Steel	Duralumin	Manual safety, Safety notch on the hammer



**RECOMMENDED  
ACCESSORIES**



## A NEW GENERATION OF SA SPORT PISTOLS OPTIMIZED FOR THE **IPSC STANDARD** DIVISION

Since 2005, the TS – TACTICAL SPORTS label has been given to top sports specials based on the legendary CZ 75 model. The CZ TS 2 series is the result of development activities that draw upon the extensive experience of CZ Shooting Team, together with today's most advanced design principles and manufacturing processes.

*Kahlil Adrian Viray,  
IPSC World Champion,  
CZ Shooting Team,  
CZ TS 2 ORANGE user*

**CZ TS 2**  
SERIES



# MAIN FEATURES OF THE CZ TS 2 SERIES



Height adjustable metal rear sight (CZ TS 2 DEEP BRONZE, CZ TS 2 RACING GREEN and CZ TS 2 ORANGE)



1 mm red fiber optic front sight for quick and intuitive aiming



Attractive design of the slide, frame and sport hammer



Extended manual safety on left side



Single-Action (SA) only trigger mechanism with short travel and quick reset



Improved ergonomics contribute for extreme shooting comfort



Aggressive checkering ensures a firm and tactile grip



# CZ TS 2 ORANGE

**NEW**



**CHOICE OF  
KAHLIL ADRIAN VIRAY  
STANDARD DIVISION  
WORLD CHAMPION  
AT 2022 IPSC HANDGUN  
WORLD SHOOT**



PATTAYA, THAILAND

A sport special developed in accordance with the latest trends in the IPSC Standard division. Its main, new feature is a heavy polished barrel, which has a number of advantages, chief among them more control during very quick, repetitive shots. Extra cocking serrations are placed on the top edge of the slide. The barrel-to-slide and slide-to-frame are hand-fitted to achieve the smallest possible tolerances for optimized operation. This model also comes with a thin profile thumb rest with ideal placement, higher positioned ambidextrous manual safeties and an adjustable rear sight. The duralumin grips, adjustable magazine release button, magwell and magazine base plate are made from orange anodized duralumin.

**A NEW LEVEL  
OF ACCURACY  
AND SPEED**

MODEL	CALIBER	MAGAZINE CAPACITY	WEIGHT with empty magazine (g)	DIMENSIONS L x W x H (mm)	BARREL LENGTH (mm)	SIGHTS	THREAD	TRIGGER PULL (N)	TRIGGER TRAVEL (mm)	TRIGGER RESET (mm)	FRAME	GRIPS	SAFETY FEATURES
CZ TS 2 ORANGE	9 x 19	20 / 10	1470	225 x 45 x 149	130	Fiber optic front sight, Checkered rear sight	-	SA: 8	3-4	3-4	Steel	Duralumin	Manual safety, Safety notch on the hammer
CZ TS 2 ORANGE	40 S&W	17	1460	225 x 45 x 149	130	Fiber optic front sight, Checkered rear sight	-	SA: 8	3-4	3-4	Steel	Duralumin	Manual safety, Safety notch on the hammer





STANDARD

## CZ TS 2 DEEP BRONZE

A sport special with hand-fitted, custom components for competing in the IPSC Standard Division. It features a Deep Bronze finished frame and polished barrel. The flat grips, magazine base and adjustable magazine release are made from black anodized duralumin. A flat slide release and thumb rest come as standard.



STANDARD

## CZ TS 2 RACING GREEN

A more advanced design of the sport special for the IPSC Standard Division with flat, green anodized duralumin grips and magazines with green anodized base plates. Advanced features include increased user comfort, a height adjustable rear metal sight, a thumb rest, a flat slide stop and an adjustable, green anodized magazine release button.



STANDARD

## CZ TS 2

Base model of the sport special for competing in the IPSC Standard Division or for target shooting. This model, which was developed together with members of the CZ Shooting Team, is equipped with flat, silver anodized duralumin grips, fixed metal sights and an extended, manual safety on the left side of the pistol (flat safety on the right side). The most affordable version in the series, it stands out for extreme shooting comfort and high accuracy.

MODEL	CALIBER	MAGAZINE CAPACITY	WEIGHT with empty magazine (g)	DIMENSIONS L x W x H (mm)	BARREL LENGTH (mm)	SIGHTS	THREAD	TRIGGER PULL (N)	TRIGGER TRAVEL (mm)	TRIGGER RESET (mm)	FRAME	GRIPS	SAFETY FEATURES
CZ TS 2 DEEP BRONZE	9 x 19	20 / 10	1350	225 x 42 x 149	130	Fiber optic front sight, Height adjustable visor	-	SA: 8	3-4	3-4	Steel	Duralumin	Manual safety, Safety notch on the hammer
CZ TS 2 RACING GREEN	9 x 19	20 / 10	1350	225 x 42 x 149	130	Fiber optic front sight, Height adjustable visor	-	SA: 8	3-4	3-4	Steel	Duralumin	Manual safety, Safety notch on the hammer
CZ TS 2	9 x 19	20	1350	225 x 42 x 149	130	Fiber optic front sight, Height adjustable visor	-	SA: 8	3-4	3-4	Steel	Duralumin	Manual safety, Safety notch on the hammer
CZ TS 2	40 S&W	17	1380	225 x 44 x 149	130	Fiber optic front sight, Checkered rear sight	-	SA: 8	3-4	3-4	Steel	Duralumin	Manual safety, Safety notch on the hammer



# CZ 75 SERIES



## CZ 75 B

A modern version of one of the most famous pistols of all time. This all-steel, large-caliber SA | DA pistol with an external hammer still captivates users with its superb ergonomics and low trigger pull weight. The letter B stands for the automatic striker block, which improves drop safety.



## CZ 75 COMPACT

A compact for fans of classic construction and traditional manufacturing materials. The main advantages of this all-steel pistol, which can be simply described as a smaller and lighter variant of the CZ 75 B, includes user-friendly control during shooting, high accuracy and extreme durability.



## CZ 75 SP-01 SHADOW

IPSC Production division world champions have been fully involved in the development of this all-steel, SA | DA large caliber pistol with an external hammer. Due to an innovative approach to the shape of key components, a remarkably comfortable, accurate, safe and durable pistol was created. It's an excellent choice for sport shooting and self-defense, as well as for use as a service firearm.



## CZ 75 P-01

A popular compact with an aluminum alloy frame and proven SA | DA trigger mechanism from the CZ 75 series. It's a clear choice for those looking for a powerful, reliable and user-friendly pistol with dimensions and weight optimized for everyday carry.

MODEL	CALIBER	MAGAZINE CAPACITY	WEIGHT with empty magazine (g)	DIMENSIONS L x W x H (mm)	BARREL LENGTH (mm)	SIGHTS	THREAD	TRIGGER PULL (N)	TRIGGER TRAVEL (mm)	TRIGGER RESET (mm)	FRAME	GRIPS	SAFETY FEATURES
CZ 75 B	9 x 19	16	1170	208 x 36,5 x 144	114	Luminescent	-	SA: 20 DA: 46	SA: 9±1 DA: 15±1	6-7	Steel	Polymer	Manual safety, Safety notch on the hammer, Firing pin block
CZ 75 COMPACT	9 x 19	15	920	184 x 36 x 128	98,5	Luminescent	-	SA: 20 DA: 46	SA: 9±1 DA: 15±1	6-7	Steel	Rubber	Manual safety, Safety notch on the hammer, Firing pin block
CZ 75 SP-01 SHADOW	9 x 19	19	1170	209 x 42 x 150	114	Fiber optic front sight, Checkered rear sight	-	SA: 15 DA: 46	SA: 8±1 DA: 13±1	6-7	Steel	Rubber	Manual safety, Safety notch on the hammer
CZ 75 P-01	9 x 19	15	800	184 x 38 x 135	92,5	Luminescent	-	SA: 20 DA: 46	SA: 9±1 DA: 15±1	6-7	Aluminum alloy	Rubber	Manual safety, Safety notch on the hammer, Firing pin block





## RELIABLE STRIKER-FIRED PISTOL SERIES WITH POLYMER FRAME

The industry-leading CZ P-10 series is offered in a comprehensive array of sizes, from supercompact (CZ P-10 M) to subcompact (CZ P-10 S), compact (CZ P-10 C) and full-size (CZ P-10 F). Most models are also available with a design that allows for the easy installation of a suppressor and/or red dot sight.

All CZ P-10 series pistols feature maximum reliability, high accuracy, a long service life and shooting comfort. The sophisticated grip and checkering were created in accordance with the innovative DiFEND ergonomic methodology, which significantly contributes to extreme user-friendliness. The very first model released in this series, the CZ P-10 C compact, was named “2017 Gun of the Year” by the prestigious American magazine “Guns & Ammo”.

**CZ P-10**  
SERIES



# MAIN FEATURES OF THE CZ P-10 SERIES



Extremely durable and weather resistant finish on slide and barrel



Front and rear cocking serrations for comfortable and safe handling



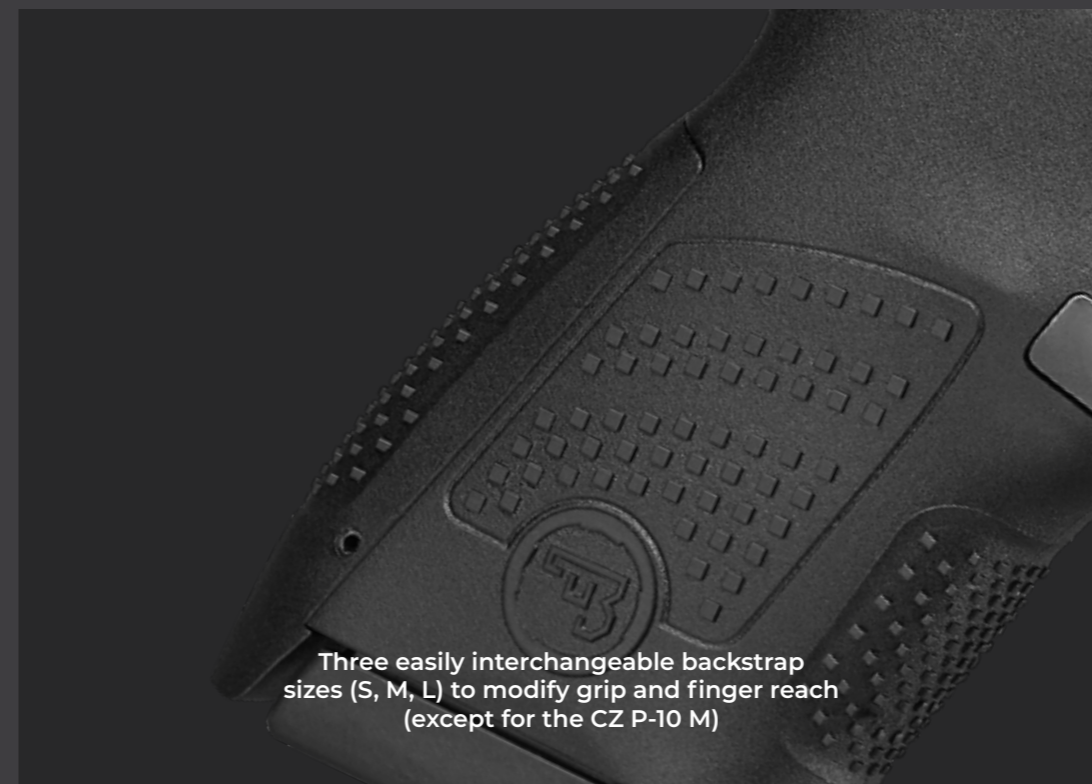
Lightweight and durable fiberglass-reinforced polymer frame is mechanically strong and thermally stable



Flat ambidextrous slide stop (CZ P-10 S, CZ P-10 C and CZ P-10 F models)



Swappable magazine release is right- and left-handed friendly



Three easily interchangeable backstrap sizes (S, M, L) to modify grip and finger reach (except for the CZ P-10 M)



Ergonomic grip with prominent checkering for superb shooting comfort, stability and safety



## CZ P-10 F

The full-size model of the CZ P-10 pistol is the ideal choice for shooters who prefer the best possible grip, maximum magazine capacity, a long barrel and an extended sight radius.



## CZ P-10 F OR SR

The CZ P-10 F OR SR (Optics-Ready-Suppressor-Ready) features both an innovative CZ interface for mounting a red dot sight and extended barrel with 1/2" x 28 UNEF – 3A threads for mounting a suppressor. This model allows for more flexible use and offers a higher level of shooting comfort.

## CZ P-10 F OR

The CZ P-10 F OR (Optics-Ready) has been designed for the increasingly popular option of mounting a red dot sight quickly and easily. The innovative CZ mounting interface is known for its robustness, strength, durability, low installation height and easy aiming with the red dot sight at short to long distances. This model also comes with high (cowitness) iron sights in case optics are damaged or fail.



## CZ P-10 F 45 AUTO

This high-powered, full-size model combines an increased 13+1 firing capacity with key benefits of the CZ P-10 family, which include excellent ergonomics, light trigger pull, impressive durability, extreme reliability and high accuracy.

MODEL	CALIBER	MAGAZINE CAPACITY	WEIGHT with empty magazine (g)	DIMENSIONS L x W x H (mm)	BARREL LENGTH (mm)	SIGHTS	THREAD	TRIGGER PULL (N)	TRIGGER TRAVEL (mm)	TRIGGER RESET (mm)
CZ P-10 F	9 x 19	19 / 10	810	203 x 32 x 150	114	Luminescent	No	25±4	9±1	4
CZ P-10 F OR	9 x 19	19	810	203 x 32 x 153	114	Luminescent	No	25±4	9±1	4
CZ P-10 F OR SR	9 x 19	19	830	225 x 32 x 153	134	Luminescent	1/2" x 28 UNEF – 3A	25±4	9±1	4
CZ P-10 F 45 Auto	45 Auto	13	930	207 x 34 x 151	114	Luminescent	No	25±4	9±1	4

FRAME	GRIPS	SAFETY FEATURES
Fiberglass-reinforced polymer	–	Trigger safety, Trigger bar safety, Firing pin block
Fiberglass-reinforced polymer	–	Trigger safety, Trigger bar safety, Firing pin block
Fiberglass-reinforced polymer	–	Trigger safety, Trigger bar safety, Firing pin block
Fiberglass-reinforced polymer	–	Trigger safety, Trigger bar safety, Firing pin block



## CZ P-10 C

Due to its compact dimensions, innovative design and large firing capacity, this highly advanced, striker-fired pistol is suitable for concealed carry.



## CZ P-10 C OR

The OR (Optics-Ready) model comes with a modified slide for easy attachment of a red dot sight. This innovative solution from CZ is characterized by its strong and durable assembly, low mounting height, easy aiming with a red dot sight (even at long distances), and the option to use iron sights in the event of the optics failing.



## CZ P-10 C OR SR

The CZ P-10 C OR SR (Optics-Ready-Suppressor-Ready) features both a slide with an innovative interface for mounting a red dot sight and an extended barrel with 1/2" x 28 UNEF – 3A threads for mounting a suppressor. This model allows for quicker target acquisition and provides a higher level of shooting comfort.

MODEL	CALIBER	MAGAZINE CAPACITY	WEIGHT with empty magazine (g)	DIMENSIONS L x W x H (mm)	BARREL LENGTH (mm)	SIGHTS	THREAD	TRIGGER PULL (N)	TRIGGER TRAVEL (mm)	TRIGGER RESET (mm)
CZ P-10 C	9 x 19, 380 Auto	15	740	187 x 32 x 132	102	Luminescent	No	25±4	9±1	4
CZ P-10 C OR	9 x 19	15	740	187 x 32 x 135	102	Luminescent	No	25±4	9±1	4
CZ P-10 C OR SR	9 x 19	15	760	209 x 32 x 135	122	Luminescent	1/2" x 28 UNEF – 3A	25±4	9±1	4

FRAME	GRIPS	SAFETY FEATURES
Fiberglass-reinforced polymer	–	Trigger safety, Trigger bar safety, Firing pin block
Fiberglass-reinforced polymer	–	Trigger safety, Trigger bar safety, Firing pin block
Fiberglass-reinforced polymer	–	Trigger safety, Trigger bar safety, Firing pin block





## CZ P-10 S

A powerful, large-capacity subcompact with optimized dimensions for concealed carry, while maintaining the best possible shooting comfort, reliability and accuracy. With a larger 12+1 firing capacity, which is impressive for its class, the CZ P-10 S can be easily increased by another two 9 × 19 rounds with the exchangeable magazine base plate.



## CZ P-10 S OR

A subcompact with the slide designed for easy mounting of red dot sights with the proper dimensions. High (co-witness) iron sights enable accurate shooting, even in the event of the optics being damaged or failing.



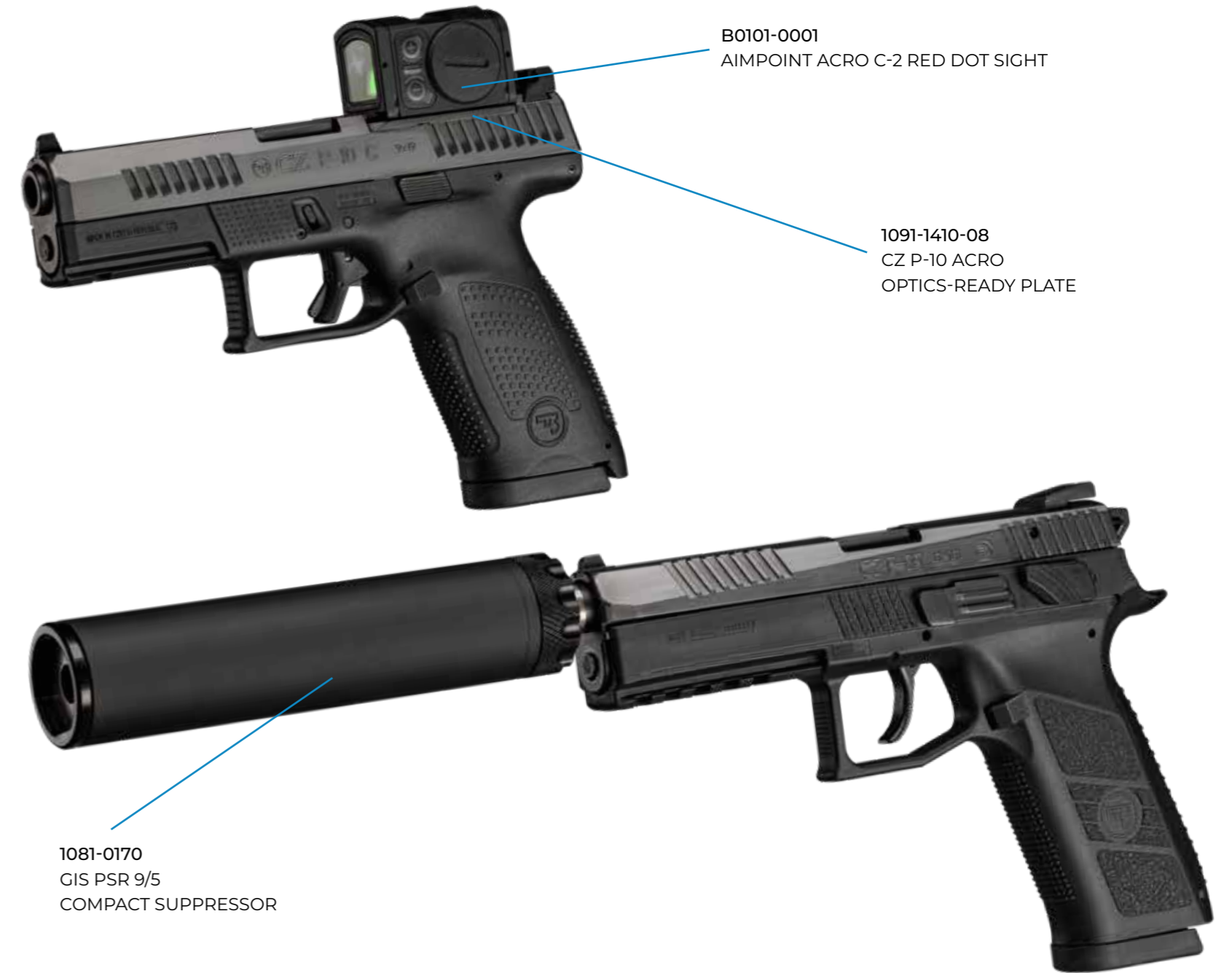
## CZ P-10 M

The CZ P-10 M is a reliable and exceptionally accurate supercompact pistol chambered in 9 × 19. Despite its radical miniaturization, it retains the stand out features that have set the CZ P-10 series apart from other striker-fired pistols, most notably outstanding ergonomics and a superb trigger. With a 7+1 capacity and internal slide stop, it's an ideal firearm for everyday concealed carry.



MODEL	CALIBER	MAGAZINE CAPACITY	WEIGHT with empty magazine (g)	DIMENSIONS L × W × H (mm)	BARREL LENGTH (mm)	SIGHTS	THREAD	TRIGGER PULL (N)	TRIGGER TRAVEL (mm)	TRIGGER RESET (mm)
CZ P-10 S	9 × 19	12	710	170 × 32 × 116	89,5	Luminescent	No	25±4	9±1	4
CZ P-10 S OR	9 × 19	12	710	170 × 32 × 119	89,5	Luminescent	No	25±4	9±1	4
CZ P-10 M	9 × 19	7	575	160,5 × 25,5 × 112	85	Luminescent	No	52	9±1	4

FRAME	GRIPS	SAFETY FEATURES
Fiberglass-reinforced polymer	–	Trigger safety, Trigger bar safety, Firing pin block
Fiberglass-reinforced polymer	–	Trigger safety, Trigger bar safety, Firing pin block
Fiberglass-reinforced polymer	–	Trigger safety, Trigger bar safety



**RECOMMENDED  
ACCESSORIES**



# WORLD LEADER IN THE **SA/DA** POLYMER PISTOL CATEGORY

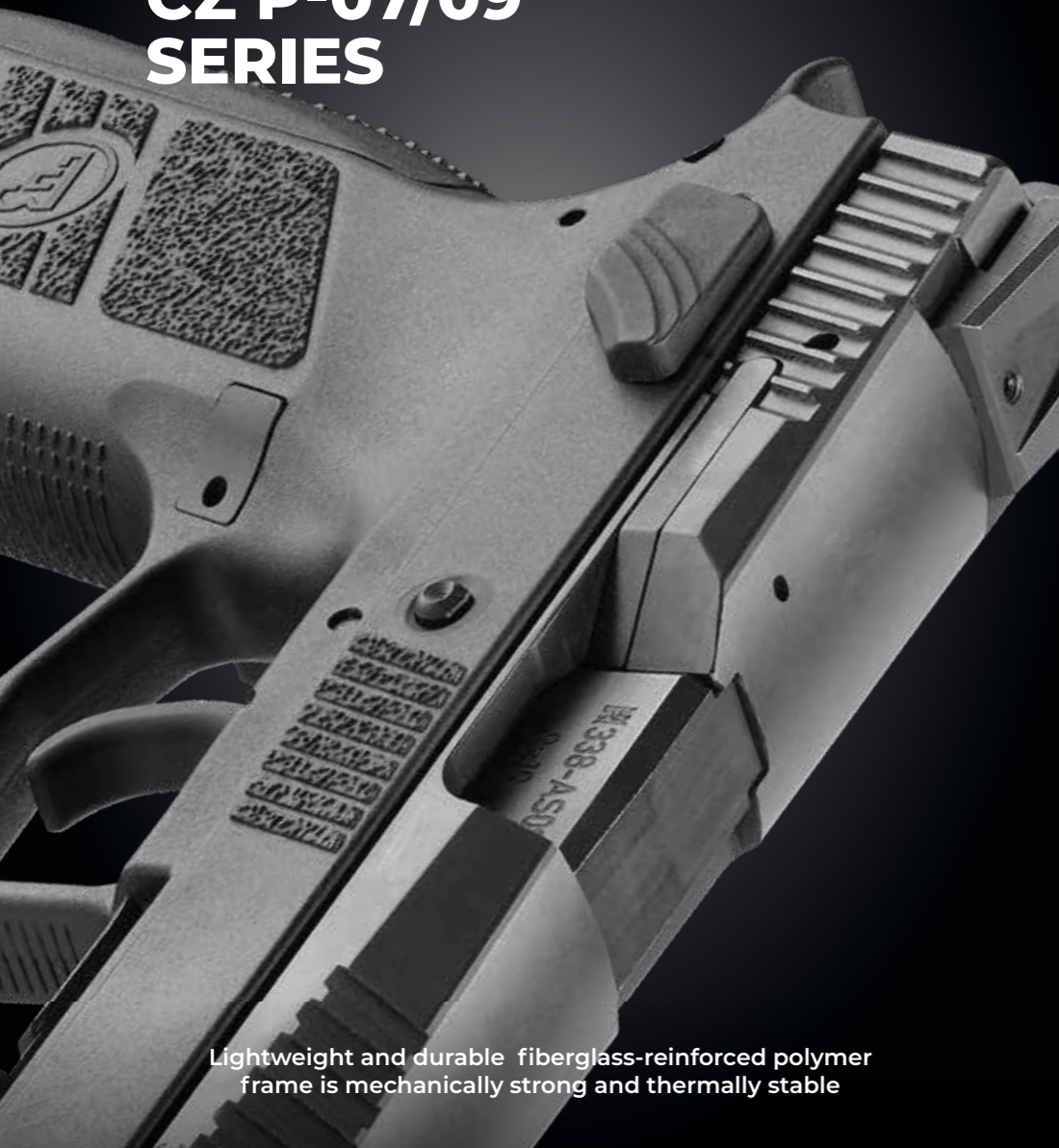
The CZ P-07 (compact) and CZ P-09 (full-size) models enjoy an impressive reputation around the world for their comfortable and simple operation, high accuracy even during rapid firing, and absolute reliability in adverse conditions. Their main advantage is the original OMEGA trigger system, which features smooth trigger pull and low pull weight in both single-action and double-action modes. Easily accessible, ambidextrous controls can be easily converted from manual safety to decocker and vice versa. All calibers come with high capacity magazines, which can be further increased with an easily interchangeable magazine base plate.



**CZ P-07/09**  
SERIES



# MAIN FEATURES OF THE CZ P-07/09 SERIES



Lightweight and durable fiberglass-reinforced polymer frame is mechanically strong and thermally stable



Sloping front of the slide for easier holstering



Front and rear cocking serrations allow for comfortable and safe handling of slide



Standardized MIL-STD-1913 rail allows for attachment of a flashlight, laser pointer or both



Easy user conversion from manual safety to decocker and vice versa



Three easily interchangeable backstrap sizes (S, M, L) to modify grip and finger reach



Extremely simple and reliable OMEGA trigger system



## CZ P-09

Base model of this full-size SA | DA pistol range. The CZ P-09 is for shooters who require maximum accuracy, the highest possible firing capacity and the lowest possible weight. The highly durable fiberglass-reinforced polymer frame comes with interchangeable backstraps for customizing grip and finger reach.



## CZ P-09 SR

An innovative, full-size model with an extended, threaded muzzle for easy and reliable installation of a suppressor. It's the ideal choice for shooters who care about protecting their ears and respecting their surroundings.



## CZ P-07

An extremely popular model that combines the winning features of the OMEGA trigger mechanism, reduced dimensions and low weight, while retaining a large capacity magazine. As a result, you're provided with an innovative design, extreme shooting comfort, high accuracy and maximum safety in a perfectly sized firearm that's also an ideal choice for concealed carry.



## CZ P-07 SR

Another compact model in this popular series that follows the latest trends of offering an innovative design that features an extended, threaded muzzle for the easy and reliable installation of a suppressor.



MODEL	CALIBER	MAGAZINE CAPACITY	WEIGHT with empty magazine (g)	DIMENSIONS L x W x H (mm)	BARREL LENGTH (mm)	SIGHTS	THREAD	TRIGGER PULL (N)	TRIGGER TRAVEL (mm)	TRIGGER RESET (mm)	FRAME	GRIPS	SAFETY FEATURES
CZ P-09	9 x 19	19	860	208 x 37 x 148	115	Luminescent	No	SA: 21 DA: 44±2	SA: 10±1 DA: 13±2	7±1	Fiberglass-reinforced polymer	-	Manual safety, Safety notch on the hammer, Firing pin block
CZ P-09 SR	9 x 19	19	880	230 x 37 x 148	135	Luminescent	1/2" x 28 UNEF - 3A	SA: 21 DA: 44±2	SA: 10±1 DA: 13±2	7±1	Fiberglass-reinforced polymer	-	Manual safety, Safety notch on the hammer, Firing pin block
CZ P-07	9 x 19, 380 Auto	15	780	185 x 37 x 130	95	Luminescent	No	SA: 21 DA: 44±2	SA: 10±1 DA: 13±2	7±1	Fiberglass-reinforced polymer	-	Manual safety, Safety notch on the hammer, Firing pin block
CZ P-07 SR	9 x 19	15	800	207 x 37 x 130	115	Luminescent	1/2" x 28 UNEF - 3A	SA: 21 DA: 44±2	SA: 10±1 DA: 13±2	7±1	Fiberglass-reinforced polymer	-	Manual safety, Safety notch on the hammer, Firing pin block





## KADET ADAPTERS

Complete kits for the easy and quick conversion of selected CZ large caliber pistols to fire 22 LR cartridges, ensuring maximum comfort and affording shooting. Assembly does not require any modifications. The basic kit always includes a 10-round magazine and a set of recoil springs to ensure reliable operation with all types of ammunition.

ADAPTER  
CZ **75 SP-01 KADET**



ADAPTER  
CZ **SHADOW 2 KADET**



ADAPTER  
CZ **P-09 KADET**



ADAPTER  
CZ **P-07 KADET**



MODEL	CALIBER	MAGAZINE CAPACITY	WEIGHT with empty magazine (g)	BARREL LENGTH (mm)	SIGHTS
ADAPTÉR CZ 75 SP-01 KADET	22 LR	10	300	120	Checkered rear sight
ADAPTÉR CZ SHADOW 2 KADET	22 LR	10	300	125	Checkered rear sight
ADAPTÉR CZ P-09 KADET	22 LR	10	300	120	Checkered rear sight
ADAPTÉR CZ P-07 KADET	22 LR	10	280	103	Checkered rear sight



MODEL	CALIBER	MAGAZINE CAPACITY	WEIGHT with empty magazine (g)	DIMENSIONS L × W × H (mm)	BARREL LENGTH (mm)	SIGHTS	THREAD	TRIGGER PULL (N)	TRIGGER TRAVEL (mm)	TRIGGER RESET (mm)	FRAME	GRIPS	SAFETY FEATURES
<b>CZ SHADOW 2 COMPACT</b>	9 × 19	15	900	191 × 35 × 138	102	Fiber optic front sight, Checkered rear sight	–	SA: 15 DA: 46	SA: 3–4 DA: 5	3–4	Forged aluminum alloy	Duralumin	Manual safety, Safety notch on the hammer
<b>CZ SHADOW 2</b>	9 × 19	19 / 10	1330	217 × 34 × 157	120	Fiber optic front sight, Checkered rear sight	–	SA: 15 DA: 46	SA: 3–4 DA: 5	3–4	Steel	Duralumin	Manual safety, Safety notch on the hammer
<b>CZ SHADOW 2 OR</b>	9 × 19	19	1330	217 × 34 × 157	120	Fiber optic front sight, Checkered rear sight	–	SA: 15 DA: 46	SA: 3–4 DA: 5	3–4	Steel	Duralumin	Manual safety, Safety notch on the hammer
<b>CZ SHADOW 2 SA</b>	9 × 19	19	1330	217 × 42 × 157	120	Fiber optic front sight, Checkered rear sight	–	SA: 15	3–4	3–4	Steel	Duralumin	Manual safety, Safety notch on the hammer
<b>CZ SHADOW 2 ORANGE</b>	9 × 19	19	1330	217 × 42 × 157	120	Fiber optic front sight, Checkered rear sight	–	SA: 15 DA: 46	SA: 3–4 DA: 5	3–4	Steel	Duralumin	Manual safety, Safety notch on the hammer
<b>CZ SHADOW 2 URBAN GREY</b>	9 × 19	19	1330	217 × 34 × 157	120	Fiber optic front sight, Checkered rear sight	–	SA: 15 DA: 46	SA: 3–4 DA: 5	3–4	Steel	Duralumin	Manual safety, Safety notch on the hammer
<b>CZ TS 2 ORANGE</b>	9 × 19	20 / 10	1470	225 × 45 × 149	130	Fiber optic front sight, Checkered rear sight	–	SA: 8	3–4	3–4	Steel	Duralumin	Manual safety, Safety notch on the hammer
<b>CZ TS 2 ORANGE</b>	40 S&W	17	1460	225 × 45 × 149	130	Fiber optic front sight, Checkered rear sight	–	SA: 8	3–4	3–4	Steel	Duralumin	Manual safety, Safety notch on the hammer
<b>CZ TS 2 DEEP BRONZE</b>	9 × 19	20 / 10	1350	225 × 42 × 149	130	Fiber optic front sight, Height adjustable visor	–	SA: 8	3–4	3–4	Steel	Duralumin	Manual safety, Safety notch on the hammer
<b>CZ TS 2 RACING GREEN</b>	9 × 19	20 / 10	1350	225 × 42 × 149	130	Fiber optic front sight, Height adjustable visor	–	SA: 8	3–4	3–4	Steel	Duralumin	Manual safety, Safety notch on the hammer
<b>CZ TS 2</b>	9 × 19	20	1350	225 × 42 × 149	130	Fiber optic front sight, Height adjustable visor	–	SA: 8	3–4	3–4	Steel	Duralumin	Manual safety, Safety notch on the hammer
<b>CZ TS 2</b>	40 S&W	17	1380	225 × 44 × 149	130	Fiber optic front sight, Checkered rear sight	–	SA: 8	3–4	3–4	Steel	Duralumin	Manual safety, Safety notch on the hammer
<b>CZ 75 B</b>	9 × 19	16	1170	208 × 36,5 × 144	114	Luminescent	–	SA: 20 DA: 46	SA: 9±1 DA: 15±1	6–7	Steel	Polymer	Manual safety, Safety notch on the hammer, Firing pin block
<b>CZ 75 COMPACT</b>	9 × 19	15	920	184 × 36 × 128	98,5	Luminescent	–	SA: 20 DA: 46	SA: 9±1 DA: 15±1	6–7	Steel	Rubber	Manual safety, Safety notch on the hammer, Firing pin block
<b>CZ 75 SP-01 SHADOW</b>	9 × 19	19	1170	209 × 42 × 150	114	Fiber optic front sight, Checkered rear sight	–	SA: 15 DA: 46	SA: 8±1 DA: 13±1	6–7	Steel	Rubber	Manual safety, Safety notch on the hammer
<b>CZ 75 P-01</b>	9 × 19	15	800	184 × 38 × 135	92,5	Luminescent	–	SA: 20 DA: 46	SA: 9±1 DA: 15±1	6–7	Aluminum alloy	Rubber	Manual safety, Safety notch on the hammer, Firing pin block
<b>CZ P-10 F</b>	9 × 19	19 / 10	810	203 × 32 × 150	114	Luminescent	No	25±4	9±1	4	Fiberglass-reinforced polymer	–	Trigger safety, Trigger bar safety, Firing pin block
<b>CZ P-10 F OR</b>	9 × 19	19	810	203 × 32 × 153	114	Luminescent	No	25±4	9±1	4	Fiberglass-reinforced polymer	–	Trigger safety, Trigger bar safety, Firing pin block
<b>CZ P-10 F OR SR</b>	9 × 19	19	830	225 × 32 × 153	134	Luminescent	1/2" × 28 UNEF – 3A	25±4	9±1	4	Fiberglass-reinforced polymer	–	Trigger safety, Trigger bar safety, Firing pin block
<b>CZ P-10 F 45 Auto</b>	45 Auto	13	930	207 × 34 × 151	114	Luminescent	No	25±4	9±1	4	Fiberglass-reinforced polymer	–	Trigger safety, Trigger bar safety, Firing pin block
<b>CZ P-10 C</b>	9 × 19, 380 Auto	15	740	187 × 32 × 132	102	Luminescent	No	25±4	9±1	4	Fiberglass-reinforced polymer	–	Trigger safety, Trigger bar safety, Firing pin block
<b>CZ P-10 C OR</b>	9 × 19	15	740	187 × 32 × 135	102	Luminescent	No	25±4	9±1	4	Fiberglass-reinforced polymer	–	Trigger safety, Trigger bar safety, Firing pin block
<b>CZ P-10 C OR SR</b>	9 × 19	15	760	209 × 32 × 135	122	Luminescent	1/2" × 28 UNEF – 3A	25±4	9±1	4	Fiberglass-reinforced polymer	–	Trigger safety, Trigger bar safety, Firing pin block
<b>CZ P-10 S</b>	9 × 19	12	710	170 × 32 × 116	89,5	Luminescent	No	25±4	9±1	4	Fiberglass-reinforced polymer	–	Trigger safety, Trigger bar safety, Firing pin block
<b>CZ P-10 S OR</b>	9 × 19	12	710	170 × 32 × 119	89,5	Luminescent	No	25±4	9±1	4	Fiberglass-reinforced polymer	–	Trigger safety, Trigger bar safety, Firing pin block
<b>CZ P-10 M</b>	9 × 19	7	575	160,5 × 25,5 × 112	85	Luminescent	No	52	9±1	4	Fiberglass-reinforced polymer	–	Trigger safety, Trigger bar safety
<b>CZ P-09</b>	9 × 19	19	860	208 × 37 × 148	115	Luminescent	No	SA: 21 DA: 44±2	SA: 10±1 DA: 13±2	7±1	Fiberglass-reinforced polymer	–	Manual safety, Safety notch on the hammer, Firing pin block
<b>CZ P-09 SR</b>	9 × 19	19	880	230 × 37 × 148	135	Luminescent	1/2" × 28 UNEF – 3A	SA: 21 DA: 44±2	SA: 10±1 DA: 13±2	7±1	Fiberglass-reinforced polymer	–	Manual safety, Safety notch on the hammer, Firing pin block
<b>CZ P-07</b>	9 × 19, 380 Auto	15	780	185 × 37 × 130	95	Luminescent	No	SA: 21 DA: 44±2	SA: 10±1 DA: 13±2	7±1	Fiberglass-reinforced polymer	–	Manual safety, Safety notch on the hammer, Firing pin block
<b>CZ P-07 SR</b>	9 × 19	15	800	207 × 37 × 130	115	Luminescent	1/2" × 28 UNEF – 3A	SA: 21 DA: 44±2	SA: 10±1 DA: 13±2	7±1	Fiberglass-reinforced polymer	–	Manual safety, Safety notch on the hammer, Firing pin block

## ADAPTERS

<b>ADAPTER CZ 75 SP-01 KADET</b>	22 LR	10	300		120	Checkered rear sight
<b>ADAPTER CZ SHADOW 2 KADET</b>	22 LR	10	300		125	Checkered rear sight
<b>ADAPTER CZ P-09 KADET</b>	22 LR	10	300		120	Checkered rear sight
<b>ADAPTER CZ P-07 KADET</b>	22 LR	10	280		103	Checkered rear sight







## CENTERFIRE RIFLES

CZ rifles for hunting and sport are traditionally among the best long firearms available on the world market. As with all our products, the CZ brand is synonymous with ingenious design, reliability, accuracy and first-rate quality at an affordable price. The innovative, highly modular design of the CZ 600 series comes with a number of patented features that improve all key characteristics – from reliability and durability to ergonomics and shooting comfort to safety and accuracy.

## THE CZ 600 SERIES FEATURES A PATENT PROTECTED BOLT DESIGN THAT ENSURES 100% USER-CONTROLLED FEED IN ALL SHOOTING POSITIONS, AND EVEN UNDER THE MOST DEMANDING CONDITIONS

Other benefits include a patented, ergonomically designed vertical safety with completely silent operation, an exceptional magazine that users can select to function as detachable or locked, an extremely durable finish, and easy disassembly that requires no manipulation of the trigger. Models for hunting, sport and hobby are available in a continuously updated range of popular calibers.





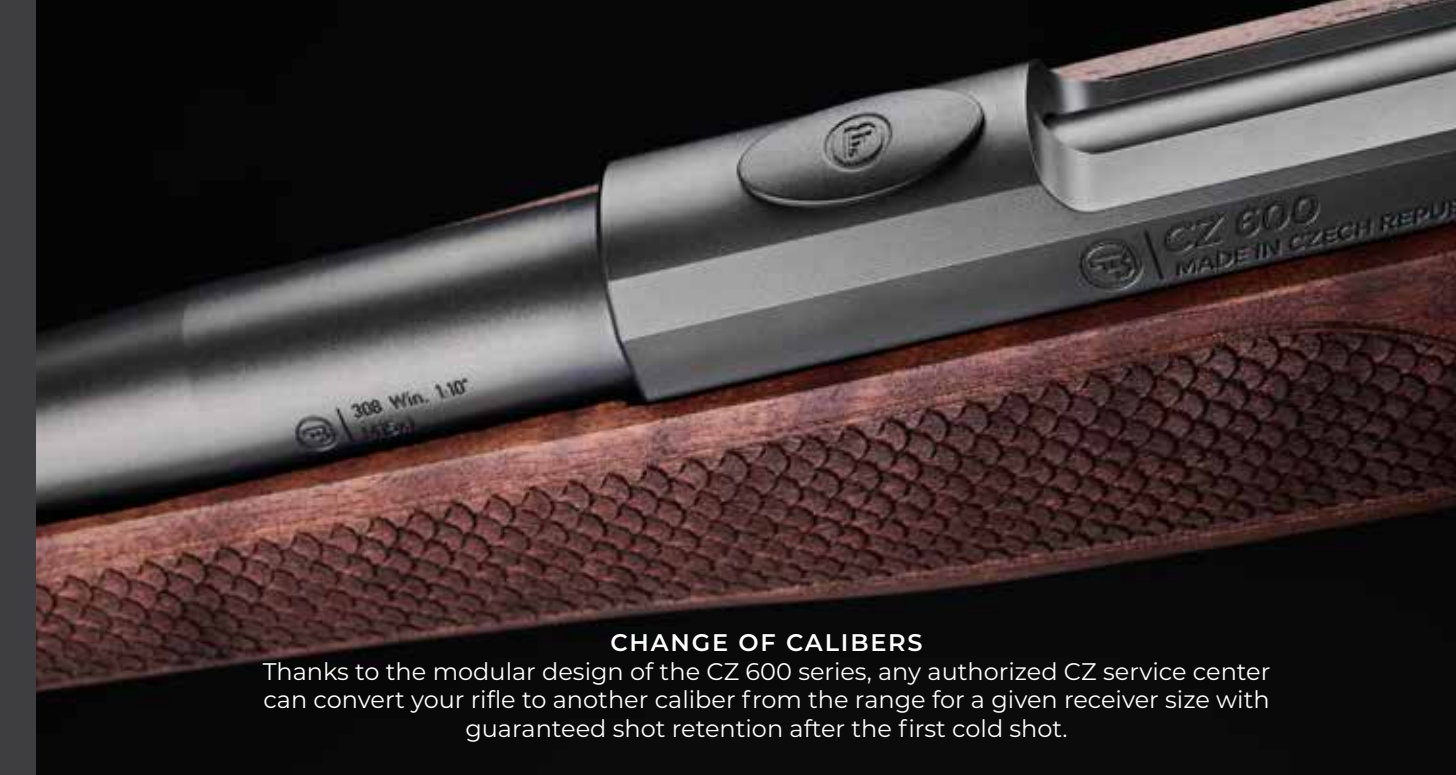
# MAIN FEATURES OF THE CZ 600 SERIES



**UNIQUE SAFETY**  
A patented, easy-to-access vertical safety at the top of the grip is released by pressing down and allows for completely silent operation.



**LOCKABLE MAGAZINE**  
A detachable, double-stack magazine with a "push n' click" loading operation contributes to an exceptionally smooth and reliable feeding of rounds. The magazine is easily locked by sliding the magazine release up. When the magazine lock is activated, the firearm changes to a fixed magazine configuration.



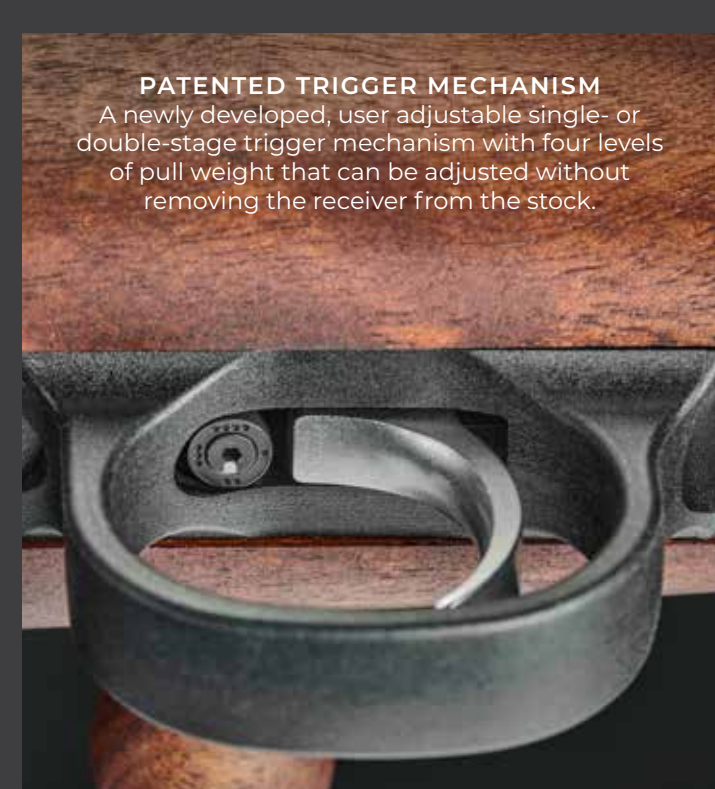
**CHANGE OF CALIBERS**  
Thanks to the modular design of the CZ 600 series, any authorized CZ service center can convert your rifle to another caliber from the range for a given receiver size with guaranteed shot retention after the first cold shot.



**SAFE DISASSEMBLY**  
A spring-loaded button on the right side of the receiver allows for easy removal of the bolt without manipulating the trigger.



**EXTREMELY DURABLE FINISH**  
The surface of metal components in the CZ 600 series comes with CZ's new BobOx chemical heat treatment, which gives it a hard, durable finish that resists corrosion.



**PATENTED TRIGGER MECHANISM**  
A newly developed, user adjustable single- or double-stage trigger mechanism with four levels of pull weight that can be adjusted without removing the receiver from the stock.



**EXTREME ACCURACY**  
The ALPHA, ERGO and LUX models are guaranteed to shoot sub-MOA at 100 m for 3 shot groups, and the RANGE model shoots sub-0.75 MOA for 5 shot groups. The compact TRAIL version is guaranteed to shoot 2 MOA. All models are tested using match-grade factory ammunition.



**SHORT ROTATION OF BOLT HANDLE**  
Due to the use of a locking system, the bolt handle rotates 60° for quick and comfortable reloading without the risk of hitting the riflescope.



**SUPERIOR QUALITY BARREL**  
High-precision barrels with caliber-optimized lengths are cold hammer forged using CZ technology. The barrel features a threaded muzzle for mounting accessories.



**STANDARDIZED MOUNTING INTERFACE**  
CZ 600 series receivers are equipped with an integrated Weaver rail (aluminum) or Remington 700 type mounting interface (steel).



**HIGHLY DURABLE RECEIVER**  
All CZ 600 series receivers are manufactured from durable aluminum or steel and come with a guaranteed service life of 20,000 shots.



# CZ 600 **NEW** AMERICAN



The CZ 600 AMERICAN is an American-style bolt-action centerfire rifle that is equipped with a beautifully crafted Turkish walnut stock with a fleur-de-lis pattern on the grip. Thanks to its straight comb design, the stock allows for comfortable shooting with a riflescope. The steel receiver features a Remington 700-style attachment interface, ensuring compatibility with wide variety of scope rings. Available in a wide range of calibers, from 223 Rem. to 300 Win. Mag., it is ready to meet the needs of a wide range of hunters and sport shooters.



**A MODERN,  
AMERICAN-STYLE  
CENTERFIRE  
HUNTING RIFLE**

MODEL	TWIST RATE / NUMBER OF GROOVES	MAGAZINE CAPACITY	WEIGHT (kg)	LENGTH (mm)	BARREL LENGTH (" / mm)	BARREL PROFILE	SIGHTS	THREAD	STOCK	FINISH	CHEEKPIECE	LOP (mm)	TRIGGER	TRIGGER PULL WEIGHT (N)	RECEIVER SIZE
<b>CZ 600 AMERICAN</b> 223 Rem.	1:9 / 6	5	3,2	1102	24 / 610	Light	No	M15 x 1	Walnut	Varnish	No	355	Single-Stage, Adjustable	6-13,5	I (mini)
<b>CZ 600 AMERICAN</b> 7,62 x 39	1:9,5 / 4	5	2,8	949	18 / 457	Light	No	M15 x 1	Walnut	Varnish	No	355	Single-Stage, Adjustable	6-13,5	I (mini)
<b>CZ 600 AMERICAN</b> 243 Win.	1:10 / 6	5	3,5	1025	20 / 508	Light	No	M15 x 1	Walnut	Varnish	No	355	Single-Stage, Adjustable	6-13,5	II (medium)
<b>CZ 600 AMERICAN</b> 270 Win.	1:10 / 4	5	3,7	1140	24 / 610	Light	No	M15 x 1	Walnut	Varnish	No	355	Single-Stage, Adjustable	6-13,5	III (long)
<b>CZ 600 AMERICAN</b> 30-06 Spring.	1:10 / 4	5	3,7	1140	24 / 610	Light	No	M15 x 1	Walnut	Varnish	No	355	Single-Stage, Adjustable	6-13,5	III (long)
<b>CZ 600 AMERICAN</b> 300 Win. Mag.	1:10 / 4	3	3,7	1140	24 / 610	Light	No	M15 x 1	Walnut	Varnish	No	355	Single-Stage, Adjustable	6-13,5	III (long)
<b>CZ 600 AMERICAN</b> 308 Win.	1:10 / 4	5	3,5	1025	20 / 508	Light	No	M15 x 1	Walnut	Varnish	No	355	Single-Stage, Adjustable	6-13,5	II (medium)
<b>CZ 600 AMERICAN</b> 6,5 Creedmoor	1:8 / 6	5	3,7	1127	24 / 610	Light	No	M15 x 1	Walnut	Varnish	No	355	Single-Stage, Adjustable	6-13,5	II (medium)



# CZ 600 LUX



The newest, centerfire hunting rifle from CZ with a traditional, European-style wood stock is the CZ 600 LUX. Its barrel features mechanical, fiber optic front and rear sights. The steel receiver comes with a Remington 700-type interface for mounting optics.



**A MODERN  
CENTERFIRE RIFLE  
WITH A TRADITIONAL  
EUROPEAN DESIGN**

MODEL	TWIST RATE / NUMBER OF GROOVES	MAGAZINE CAPACITY	WEIGHT (kg)	LENGTH (mm)	BARREL LENGTH (" / mm)	BARREL PROFILE	SIGHTS	THREAD	STOCK	FINISH	CHEEKPIECE	LOP (mm)	TRIGGER	TRIGGER PULL WEIGHT (N)	RECEIVER SIZE
CZ 600 LUX 223 Rem.	1:9 / 6	5	3,2	997	20 / 508	Light	Yes	M15 x 1	Walnut	Oil	Yes	370	Single-Stage, Adjustable	6-13,5	I (mini)
CZ 600 LUX 223 Rem.	1:9 / 6	5	3,4	1099	20 / 508	Light	Yes	M15 x 1	Walnut	Oil	Yes	370	Single-Stage, Adjustable	6-13,5	I (mini)
<b>NEW</b> CZ 600 LUX 7,62 x 39	1:9,5 / 4	5	3,0	946	18 / 457	Light	Yes	M15 x 1	Walnut	Oil	Yes	370	Single-Stage, Adjustable	6-13,5	I (mini)
CZ 600 LUX 308 Win.	1:10 / 4	5	3,8	1040	20 / 508	Light	Yes	M15 x 1	Walnut	Oil	Yes	370	Single-Stage, Adjustable	6-13,5	II (medium)
CZ 600 LUX 30-06 Spring.	1:10 / 4	5	3,7	1053	20 / 508	Light	Yes	M15 x 1	Walnut	Oil	Yes	370	Single-Stage, Adjustable	6-13,5	III (long)
CZ 600 LUX 8 x 57 IS	1:9,5 / 4	5	3,6	1053	20 / 508	Light	Yes	M15 x 1	Walnut	Oil	Yes	370	Single-Stage, Adjustable	6-13,5	III (long)
CZ 600 LUX 300 Win. Mag.	1:10 / 4	3	3,9	1155	24 / 610	Light	Yes	M15 x 1	Walnut	Oil	Yes	370	Single-Stage, Adjustable	6-13,5	III (long)



# CZ 600 ALPHA



The CZ 600 ALPHA comes with a fiber-reinforced polymer stock and semi-heavy barrel. Optics can be mounted on the Weaver rail integrated on the durable aluminum receiver. Easy maintenance makes this model particularly well suited for those who use their rifle on a daily basis and deeply value durability and reliability, regardless of inclement weather.



**DURABLE  
RIFLE  
FOR EVERYDAY  
USE**

MODEL	TWIST RATE / NUMBER OF GROOVES	MAGAZINE CAPACITY	WEIGHT (kg)	LENGTH (mm)	BARREL LENGTH ("/ mm)	BARREL PROFILE	SIGHTS	THREAD	STOCK	FINISH	CHEEKPIECE	LOP (mm)	TRIGGER	TRIGGER PULL WEIGHT (N)	RECEIVER SIZE
CZ 600 ALPHA 223 Rem.	1:7/6	5	3,0	1096	24 / 610	Semi-Heavy	No	M15 x 1	Fiber-reinforced polymer	Soft-touch	No	355	Single-Stage, Adjustable	6-13,5	I (mini)
<b>NEW</b> CZ 600 ALPHA 7,62 x 39	1:9,5/4	5	2,5	943	18 / 457	Semi-Heavy	No	M15 x 1	Fiber-reinforced polymer	Soft-touch	No	355	Single-Stage, Adjustable	6-13,5	I (mini)
<b>NEW</b> CZ 600 ALPHA 243 Win.	1:10/6	5	3,4	1020	20 / 508	Semi-Heavy	No	M15 x 1	Fiber-reinforced polymer	Soft-touch	No	355	Single-Stage, Adjustable	6-13,5	II (medium)
CZ 600 ALPHA 308 Win.	1:10/4	5	3,2	1020	20 / 508	Semi-Heavy	No	M15 x 1	Fiber-reinforced polymer	Soft-touch	No	355	Single-Stage, Adjustable	6-13,5	II (medium)
CZ 600 ALPHA 6,5 Creedmoor	1:7/6	5	3,4	1071	22 / 559	Semi-Heavy	No	M15 x 1	Fiber-reinforced polymer	Soft-touch	No	355	Single-Stage, Adjustable	6-13,5	II (medium)
CZ 600 ALPHA 6 mm Creedmoor	1:7/6	5	3,5	1071	22 / 559	Semi-Heavy	No	M15 x 1	Fiber-reinforced polymer	Soft-touch	No	355	Single-Stage, Adjustable	6-13,5	II (medium)
CZ 600 ALPHA 6,5 PRC	1:7/6	3	3,4	1071	24 / 610	Semi-Heavy	No	M15 x 1	Fiber-reinforced polymer	Soft-touch	No	355	Single-Stage, Adjustable	6-13,5	II (medium)
<b>NEW</b> CZ 600 ALPHA 270 Win.	1:10/4	5	3,5	1033	20 / 508	Semi-Heavy	No	M15 x 1	Fiber-reinforced polymer	Soft-touch	No	355	Single-Stage, Adjustable	6-13,5	III (long)
CZ 600 ALPHA 30-06 Spring.	1:10/4	5	3,3	1033	20 / 508	Semi-Heavy	No	M15 x 1	Fiber-reinforced polymer	Soft-touch	No	355	Single-Stage, Adjustable	6-13,5	III (long)
CZ 600 ALPHA 8 x 57 IS	1:9,5/4	5	3,3	1033	20 / 508	Semi-Heavy	No	M15 x 1	Fiber-reinforced polymer	Soft-touch	No	355	Single-Stage, Adjustable	6-13,5	III (long)
CZ 600 ALPHA 300 Win. Mag.	1:10/4	3	3,5	1135	24 / 610	Semi-Heavy	No	M15 x 1	Fiber-reinforced polymer	Soft-touch	No	355	Single-Stage, Adjustable	6-13,5	III (long)



# CZ 600 ERGO



A model refined for the back-country, the CZ 600 ERGO comes standard with a light profile barrel and an ergonomic, CZ-designed fiber-reinforced polymer stock with a distinctive thumbhole style pistol grip that delivers both comfort and control. All gripping surfaces feature padded inlays. The CZ 600 ERGO has a guaranteed, factory-tested sub-MOA at 100 meters (three-shot groups with match-grade factory ammunition).



**CENTERFIRE RIFLE  
WITH ERGONOMIC  
THUMBHOLE  
STOCK**

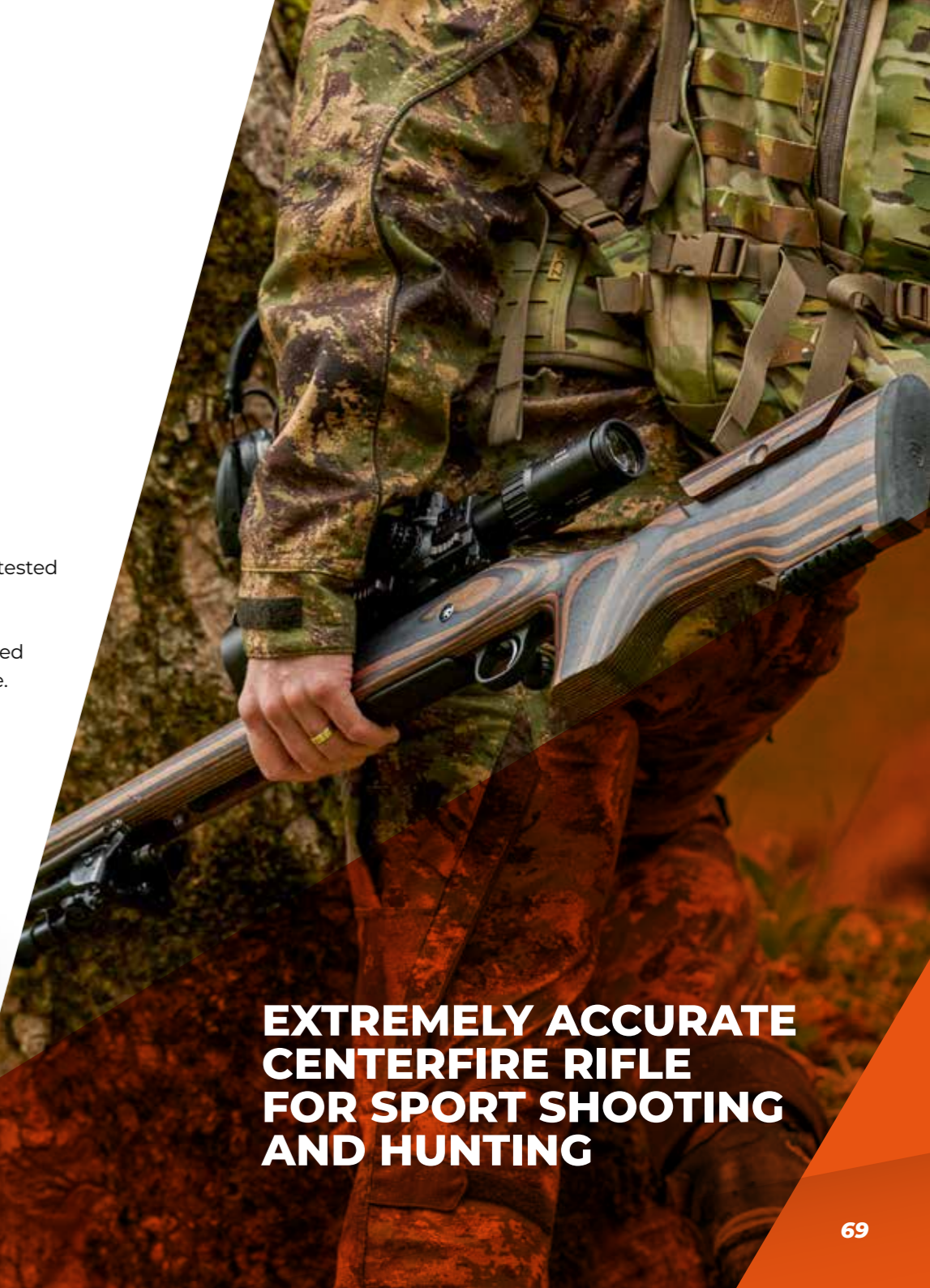
MODEL	TWIST RATE / NUMBER OF GROOVES	MAGAZINE CAPACITY	WEIGHT (kg)	LENGTH (mm)	BARREL LENGTH ("/ mm)	BARREL PROFILE	SIGHTS	THREAD	STOCK	FINISH	CHEEKPIECE	LOP (mm)	TRIGGER	TRIGGER PULL WEIGHT (N)	RECEIVER SIZE
<b>CZ 600 ERGO</b> 223 Rem.	1:9 / 6	5	2,6	1013	20 / 508	Light	No	M15 × 1	Fiber-reinforced polymer	Soft-touch	No	370	Single-Stage, Adjustable	6-13,5	I (mini)
<b>NEW CZ 600 ERGO</b> 7,62 × 39	1:9,5 / 4	5	2,4	962	18/457	Light	No	M15 × 1	Fiber-reinforced polymer	Soft-touch	No	370	Single-Stage, Adjustable	6-13,5	I (mini)
<b>CZ 600 ERGO</b> 308 Win.	1:10 / 4	5	2,9	1038	20 / 508	Light	No	M15 × 1	Fiber-reinforced polymer	Soft-touch	No	370	Single-Stage, Adjustable	6-13,5	II (medium)
<b>CZ 600 ERGO</b> 6,5 Creedmoor	1:7 / 4	5	3,0	1089	22 / 559	Light	No	M15 × 1	Fiber-reinforced polymer	Soft-touch	No	370	Single-Stage, Adjustable	6-13,5	II (medium)
<b>CZ 600 ERGO</b> 30-06 Spring.	1:10 / 4	5	2,9	1052	20 / 508	Light	No	M15 × 1	Fiber-reinforced polymer	Soft-touch	No	370	Single-Stage, Adjustable	6-13,5	III (long)
<b>CZ 600 ERGO</b> 8 × 57 IS	1:9,5 / 4	5	2,9	1052	20 / 508	Light	No	M15 × 1	Fiber-reinforced polymer	Soft-touch	No	370	Single-Stage, Adjustable	6-13,5	III (long)
<b>CZ 600 ERGO</b> 300 Win. Mag.	1:10 / 4	3	3,1	1154	24 / 610	Light	No	M15 × 1	Fiber-reinforced polymer	Soft-touch	No	370	Single-Stage, Adjustable	6-13,5	III (long)



# CZ 600 RANGE



The CZ 600 RANGE is a versatile target and hunting rifle for highly precise shooting at medium to long distances. It comes with a guaranteed, factory-tested accuracy of sub-0.75 MOA at 100 meters (five-shot groups when using match-grade factory ammunition). The stock is optimized for accuracy and features a tool-free, height adjustable comb. This model comes with a nitrided steel receiver with a mounting interface for a Remington 700 type riflescope.



**EXTREMELY ACCURATE  
CENTERFIRE RIFLE  
FOR SPORT SHOOTING  
AND HUNTING**

MODEL	TWIST RATE / NUMBER OF GROOVES	MAGAZINE CAPACITY	WEIGHT (kg)	LENGTH (mm)	BARREL LENGTH ("/ mm)	BARREL PROFILE	SIGHTS	THREAD	STOCK	FINISH	CHEEKPIECE	LOP (mm)
CZ 600 RANGE 308 Win.	1:10 / 4	5	4,6	1140	24 / 610	Heavy	No	M18 x 1	Laminated Wood	Varnish	Adjustable	370
CZ 600 RANGE 6 mm Creedmoor	1:7 / 6	5	4,7	1140	24 / 610	Heavy	No	M18 x 1	Laminated Wood	Varnish	Adjustable	370

TRIGGER	TRIGGER PULL WEIGHT (N)	RECEIVER SIZE
Single-Stage, Adjustable	6-13,5	II (medium)
Single-Stage, Adjustable	6-13,5	II (medium)



# CZ 600 TRAIL



A compact, accurate, bolt-action rifle with a PDW type telescopic stock and CZ BREN 2 style controls, the CZ 600 TRAIL is available in the popular calibers. It's a perfect choice for hobby shooters who appreciate having a generous amount of Picatinny and M-LOK mounting interfaces.



**COMPACT SPORTING RIFLE**

MODEL	TWIST RATE / NUMBER OF GROOVES	MAGAZINE CAPACITY	WEIGHT (kg)	LENGTH (mm)	BARREL LENGTH (" / mm)	BARREL PROFILE	SIGHTS	THREAD	STOCK	FINISH	CHEEKPIECE	LOP (mm)
CZ 600 TRAIL 223 Rem.	1:7 / 6	10	2,8	690-890	16 / 412	Semi-Heavy	No	M15 x 1	Fiber-reinforced polymer	-	Yes	143-347
<b>NEW</b> CZ 600 TRAIL 7,62 x 39	1:9,5 / 4	10	2,8	690-890	16 / 412	Semi-Heavy	No	M15 x 1	Fiber-reinforced polymer	-	Yes	143-347
<b>NEW</b> CZ 600 TRAIL 300 BLK	1:7 / 4	10	2,8	690-890	16 / 412	Semi-Heavy	No	M15 x 1	Fiber-reinforced polymer	-	Yes	143-347

TRIGGER	1ST TRIGGER PULL WEIGHT (N)	2ND TRIGGER PULL WEIGHT (N)	RECEIVER SIZE
Double-Stage, Adjustable	4-6	9,5-17	I (mini)
Double-Stage, Adjustable	4-6	9,5-17	I (mini)
Double-Stage, Adjustable	4-6	9,5-17	I (mini)



# CZ TSR



## ADVANCED SPORT SPECIAL

The CZ TSR sport special is chambered in a proven, high-performance caliber that's optimized for highly precise, long-range shooting. The heavy, cold hammer forged barrel is guaranteed for a minimum of 10,000 shots with an accuracy of up to 1 MOA.



*The mounted riflescope is for illustrative purposes only.*

This advanced and extremely reliable bolt-action rifle can be easily customized to each user's requirements and preferences due to the extensive use of STANAG 4694 mounting rails, as well as a number of adjustable features. Its innovative stock folds to the left or right side of the forearm for convenient transport. A further benefit is an adjustable pistol grip with interchangeable backstraps and storage space.

MODEL	CALIBER	TWIST RATE / NUMBER OF GROOVES	MAGAZINE CAPACITY	WEIGHT (kg)	LENGTH WITH STOCK FOLDED / UNFOLDED (mm)	BARREL LENGTH (\" / mm)	BARREL PROFILE	SIGHTS	THREAD	COMPENSATOR	STOCK	FINISH
CZ TSR	308 Win.	1:11 / 4	10	6,3	931 / 1188±10	26 / 660	Heavy	No	M18 × 1	Muzzle Brake	7075 T6 Aluminum Alloy	Anodized

CHEEKPIECE	LOP (mm)	TRIGGER	1ST TRIGGER PULL WEIGHT (N)	2ND TRIGGER PULL WEIGHT (N)
Adjustable	363-393	Double-Stage, Adjustable	3-5	10-20





**RECOMMENDED  
ACCESSORIES**







**RECOMMENDED  
ACCESSORIES**





# CENTERFIRE RIFLES

CENTERFIRE RIFLES PARAMETERS

MODEL	TWIST RATE / NUMBER OF GROOVES	MAGAZINE CAPACITY	WEIGHT (kg)	LENGTH (mm)	BARREL LENGTH ("/ mm)	BARREL PROFILE	SIGHTS	THREAD	STOCK	FINISH	CHEEKPIECE	LOP (mm)	TRIGGER	TRIGGER PULL WEIGHT (N)	RECEIVER SIZE
<b>CZ 600 AMERICAN</b> 223 Rem.	1:9/6	5	3,2	1102	24/610	Light	No	M15 x 1	Walnut	Varnish	No	355	Single-Stage, Adjustable	6-13,5	I (mini)
<b>CZ 600 AMERICAN</b> 7,62 x 39	1:9,5/4	5	2,8	949	18/457	Light	No	M15 x 1	Walnut	Varnish	No	355	Single-Stage, Adjustable	6-13,5	I (mini)
<b>CZ 600 AMERICAN</b> 243 Win.	1:10/6	5	3,5	1025	20/508	Light	No	M15 x 1	Walnut	Varnish	No	355	Single-Stage, Adjustable	6-13,5	II (medium)
<b>CZ 600 AMERICAN</b> 270 Win.	1:10/4	5	3,7	1140	24/610	Light	No	M15 x 1	Walnut	Varnish	No	355	Single-Stage, Adjustable	6-13,5	III (long)
<b>CZ 600 AMERICAN</b> 30-06 Spring.	1:10/4	5	3,7	1140	24/610	Light	No	M15 x 1	Walnut	Varnish	No	355	Single-Stage, Adjustable	6-13,5	III (long)
<b>CZ 600 AMERICAN</b> 300 Win. Mag.	1:10/4	3	3,7	1140	24/610	Light	No	M15 x 1	Walnut	Varnish	No	355	Single-Stage, Adjustable	6-13,5	III (long)
<b>CZ 600 AMERICAN</b> 308 Win.	1:10/4	5	3,5	1025	20/508	Light	No	M15 x 1	Walnut	Varnish	No	355	Single-Stage, Adjustable	6-13,5	II (medium)
<b>CZ 600 AMERICAN</b> 6,5 Creedmoor	1:8/6	5	3,7	1127	24/610	Light	No	M15 x 1	Walnut	Varnish	No	355	Single-Stage, Adjustable	6-13,5	II (medium)
<b>CZ 600 LUX</b> 223 Rem.	1:9/6	5	3,2	997	20/508	Light	Yes	M15 x 1	Walnut	Oil	Yes	370	Single-Stage, Adjustable	6-13,5	I (mini)
<b>CZ 600 LUX</b> 223 Rem.	1:9/6	5	3,4	1099	20/508	Light	Yes	M15 x 1	Walnut	Oil	Yes	370	Single-Stage, Adjustable	6-13,5	I (mini)
<b>NEW CZ 600 LUX</b> 7,62 x 39	1:9,5/4	5	3,0	946	18/457	Light	Yes	M15 x 1	Walnut	Oil	Yes	370	Single-Stage, Adjustable	6-13,5	I (mini)
<b>CZ 600 LUX</b> 308 Win.	1:10/4	5	3,8	1040	20/508	Light	Yes	M15 x 1	Walnut	Oil	Yes	370	Single-Stage, Adjustable	6-13,5	II (medium)
<b>CZ 600 LUX</b> 30-06 Spring.	1:10/4	5	3,7	1053	20/508	Light	Yes	M15 x 1	Walnut	Oil	Yes	370	Single-Stage, Adjustable	6-13,5	III (long)
<b>CZ 600 LUX</b> 8 x 57 IS	1:9,5/4	5	3,6	1053	20/508	Light	Yes	M15 x 1	Walnut	Oil	Yes	370	Single-Stage, Adjustable	6-13,5	III (long)
<b>CZ 600 LUX</b> 300 Win. Mag.	1:10/4	3	3,9	1155	24/610	Light	Yes	M15 x 1	Walnut	Oil	Yes	370	Single-Stage, Adjustable	6-13,5	III (long)
<b>CZ 600 ALPHA</b> 223 Rem.	1:7/6	5	3,0	1096	24/610	Semi-Heavy	No	M15 x 1	Fiber-reinforced polymer	Soft-touch	No	355	Single-Stage, Adjustable	6-13,5	I (mini)
<b>NEW CZ 600 ALPHA</b> 7,62 x 39	1:9,5/4	5	2,5	943	18/457	Semi-Heavy	No	M15 x 1	Fiber-reinforced polymer	Soft-touch	No	355	Single-Stage, Adjustable	6-13,5	I (mini)
<b>NEW CZ 600 ALPHA</b> 243 Win.	1:10/6	5	3,4	1020	20/508	Semi-Heavy	No	M15 x 1	Fiber-reinforced polymer	Soft-touch	No	355	Single-Stage, Adjustable	6-13,5	II (medium)
<b>CZ 600 ALPHA</b> 308 Win.	1:10/4	5	3,2	1020	20/508	Semi-Heavy	No	M15 x 1	Fiber-reinforced polymer	Soft-touch	No	355	Single-Stage, Adjustable	6-13,5	II (medium)
<b>CZ 600 ALPHA</b> 6,5 Creedmoor	1:7/6	5	3,4	1071	22/559	Semi-Heavy	No	M15 x 1	Fiber-reinforced polymer	Soft-touch	No	355	Single-Stage, Adjustable	6-13,5	II (medium)
<b>CZ 600 ALPHA</b> 6 mm Creedmoor	1:7/6	5	3,5	1071	22/559	Semi-Heavy	No	M15 x 1	Fiber-reinforced polymer	Soft-touch	No	355	Single-Stage, Adjustable	6-13,5	II (medium)
<b>CZ 600 ALPHA</b> 6,5 PRC	1:7/6	3	3,4	1071	24/610	Semi-Heavy	No	M15 x 1	Fiber-reinforced polymer	Soft-touch	No	355	Single-Stage, Adjustable	6-13,5	II (medium)
<b>NEW CZ 600 ALPHA</b> 270 Win.	1:10/4	5	3,5	1033	20/508	Semi-Heavy	No	M15 x 1	Fiber-reinforced polymer	Soft-touch	No	355	Single-Stage, Adjustable	6-13,5	III (long)
<b>CZ 600 ALPHA</b> 30-06 Spring.	1:10/4	5	3,3	1033	20/508	Semi-Heavy	No	M15 x 1	Fiber-reinforced polymer	Soft-touch	No	355	Single-Stage, Adjustable	6-13,5	III (long)
<b>CZ 600 ALPHA</b> 8 x 57 IS	1:9,5/4	5	3,3	1033	20/508	Semi-Heavy	No	M15 x 1	Fiber-reinforced polymer	Soft-touch	No	355	Single-Stage, Adjustable	6-13,5	III (long)
<b>CZ 600 ALPHA</b> 300 Win. Mag.	1:10/4	3	3,5	1135	24/610	Semi-Heavy	No	M15 x 1	Fiber-reinforced polymer	Soft-touch	No	355	Single-Stage, Adjustable	6-13,5	III (long)





MODEL	TWIST RATE / NUMBER OF GROOVES	MAGAZINE CAPACITY	WEIGHT (kg)	LENGTH (mm)	BARREL LENGTH (" / mm)	BARREL PROFILE	SIGHTS	THREAD	STOCK	FINISH	CHEEKPIECE	LOP (mm)	TRIGGER	TRIGGER PULL WEIGHT (N)	RECEIVER SIZE
<b>CZ 600 ERGO</b> 223 Rem.	1:9 / 6	5	2,6	1013	20 / 508	Light	No	M15 x 1	Fiber-reinforced polymer	Soft-touch	No	370	Single-Stage, Adjustable	6-13,5	I (mini)
<b>NEW CZ 600 ERGO</b> 7,62 x 39	1:9,5 / 4	5	2,4	962	18/457	Light	No	M15 x 1	Fiber-reinforced polymer	Soft-touch	No	370	Single-Stage, Adjustable	6-13,5	I (mini)
<b>CZ 600 ERGO</b> 308 Win.	1:10 / 4	5	2,9	1038	20 / 508	Light	No	M15 x 1	Fiber-reinforced polymer	Soft-touch	No	370	Single-Stage, Adjustable	6-13,5	II (medium)
<b>CZ 600 ERGO</b> 6,5 Creedmoor	1:7 / 4	5	3,0	1089	22 / 559	Light	No	M15 x 1	Fiber-reinforced polymer	Soft-touch	No	370	Single-Stage, Adjustable	6-13,5	II (medium)
<b>CZ 600 ERGO</b> 30-06 Spring.	1:10 / 4	5	2,9	1052	20 / 508	Light	No	M15 x 1	Fiber-reinforced polymer	Soft-touch	No	370	Single-Stage, Adjustable	6-13,5	III (long)
<b>CZ 600 ERGO</b> 8 x 57 IS	1:9,5 / 4	5	2,9	1052	20 / 508	Light	No	M15 x 1	Fiber-reinforced polymer	Soft-touch	No	370	Single-Stage, Adjustable	6-13,5	III (long)
<b>CZ 600 ERGO</b> 300 Win. Mag.	1:10 / 4	3	3,1	1154	24 / 610	Light	No	M15 x 1	Fiber-reinforced polymer	Soft-touch	No	370	Single-Stage, Adjustable	6-13,5	III (long)
<b>CZ 600 RANGE</b> 308 Win.	1:10 / 4	5	4,6	1140	24 / 610	Heavy	No	M18 x 1	Laminated Wood	Varnish	Adjustable	370	Single-Stage, Adjustable	6-13,5	II (medium)
<b>CZ 600 RANGE</b> 6 mm Creedmoor	1:7 / 6	5	4,7	1140	24 / 610	Heavy	No	M18 x 1	Laminated Wood	Varnish	Adjustable	370	Single-Stage, Adjustable	6-13,5	II (medium)

MODEL	TWIST RATE / NUMBER OF GROOVES	MAGAZINE CAPACITY	WEIGHT (kg)	LENGTH (mm)	BARREL LENGTH (" / mm)	BARREL PROFILE	SIGHTS	THREAD	STOCK	FINISH	CHEEKPIECE	LOP (mm)	TRIGGER	1ST TRIGGER PULL WEIGHT (N)	2ND TRIGGER PULL WEIGHT (N)	RECEIVER SIZE
<b>CZ 600 TRAIL</b> 223 Rem.	1:7 / 6	10	2,8	690-890	16 / 412	Semi-Heavy	No	M15 x 1	Fiber-reinforced polymer	-	Yes	143-347	Double-Stage, Adjustable	4-6	9,5-17	I (mini)
<b>NEW CZ 600 TRAIL</b> 7,62 x 39	1:9,5 / 4	10	2,8	690-890	16 / 412	Semi-Heavy	No	M15 x 1	Fiber-reinforced polymer	-	Yes	143-347	Double-Stage, Adjustable	4-6	9,5-17	I (mini)
<b>NEW CZ 600 TRAIL</b> 300 BLK	1:7 / 4	10	2,8	690-890	16 / 412	Semi-Heavy	No	M15 x 1	Fiber-reinforced polymer	-	Yes	143-347	Double-Stage, Adjustable	4-6	9,5-17	I (mini)







## RIMFIRE RIFLES

A gateway to the fascinating world of guns and shooting. They're an irreplaceable training aid and exciting source of entertainment, as well as an effective hunting tool and target shooter. These are considered the traditional qualities of long firearms that use rimfire ammunition, so-called rimfire rifles, and models from CZ have been designed by leading experts with a focus on innovation, shooting comfort, safety and advantageous pricing. The best proof of their success is the millions of satisfied customers and fans around the world, together with the fact that CZ is considered a global standard in this segment. The backbone of its current range is the CZ 457 bolt-action rifle series, which brings many outstanding features to the table.

## CZ 457 SERIES A NEW GENERATION OF MODERN RIMFIRE RIFLES

The CZ 457 series offers exceptional user comfort due to its easy, fast and reliable operation, even with a mounted riflescope. For maximum safety, it comes with a push-to-fire safety on the right side of the receiver, striker status indicator and a separate bolt extractor control. Shooting accuracy is ensured with its adjustable trigger mechanism that features low trigger pull weight and excellent travel, combined with a noticeably lighter striker and a new type of bedding. Other benefits include an extremely durable anticorrosion finish on metal parts, easy change of caliber by users and reliable polymer magazines that are compatible with the previous generation of CZ rimfire rifles.





# MAIN FEATURES OF THE CZ 457 SERIES



Adjustable trigger mechanism for setting pull weight and trigger travel



Striker status indicator



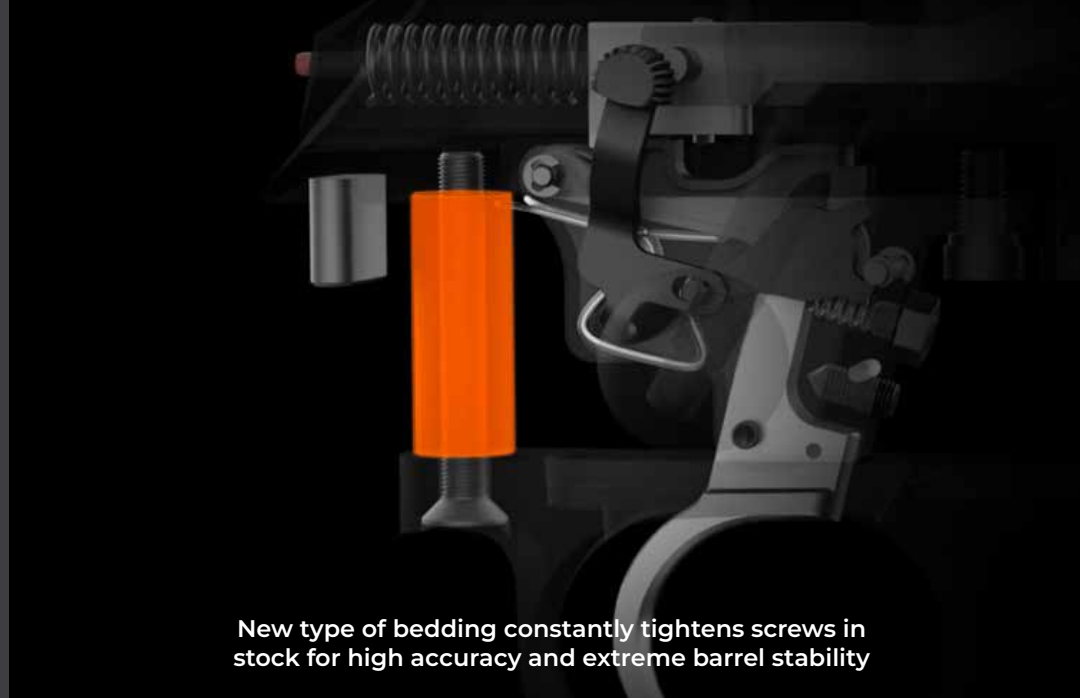
Top quality cold hammer forged barrels and easy replacement of barrel with an option to change the caliber



New ergonomic stocks



Lighter striker increases striking speed and reduces vibration during firing



New type of bedding constantly tightens screws in stock for high accuracy and extreme barrel stability



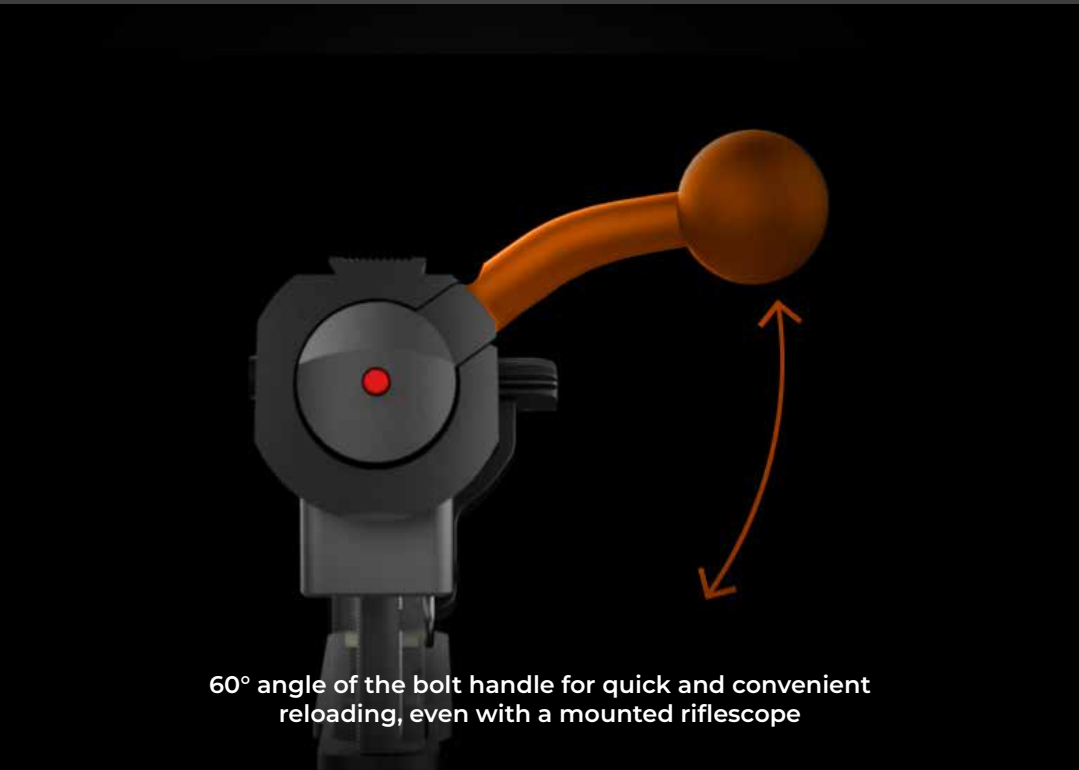
Open and remove bolt even with safety engaged



Intuitive push-to-fire safety



Separate bolt removal



60° angle of the bolt handle for quick and convenient reloading, even with a mounted riflescope



Match chamber (selected 22 LR caliber models)



CZ 457

## CARBON

NEW



The new, key feature of the CZ 457 CARBON, chambered in 22 LR, is an innovative composite barrel that combines the best properties of steel and carbon fiber to provide many unique advantages. Due to this advanced technology, the CZ 457 CARBON weighs in at only 2.15 kg, making it the lightest model in the CZ 457 series. It delivers the accuracy of varmint models, together with a host of new benefits.



MODEL	CALIBER (TWIST RATE)	MAGAZINE CAPACITY	WEIGHT (kg)	LENGTH (mm)	BARREL LENGTH (" / mm)	BARREL PROFILE	SIGHTS	THREAD	COMPENSATOR	STOCK	FINISH	CHEEKPIECE	LOP (mm)	TRIGGER	TRIGGER PULL WEIGHT (N)
CZ 457 CARBON	22 LR (1 : 16)	5	2,15	977	20 / 525	Carbon fiber-wrapped steel	No	1/2 x 20 UNF	No	Polymer	Soft-touch	No	356	Adjustable	8-15

**EXTREMELY  
LIGHTWEIGHT  
RIMFIRE RIFLE**



## CZ 457 MDT



NEW



An innovative sport model with a visually appealing duralumin chassis from the renowned MDT brand. Its fluted barrel with MATCH chamber is fitted with a compensator and the stock, optimized for extreme shooting comfort, features a height adjustable comb. LOP can be changed through the use of the four included buttpad spacers. The Picatinny mounting rail with 25 MOA inclination allows for easy sighting in of the riflescope, even at longer distances.

## CZ 457 LRP BLACK



NEW



A new version of this popular model for accurate, long range shooting. It comes with a 20" heavy and fluted cold hammer forged barrel, MATCH chamber and an effective cylindrical compensator mounted on the muzzle. All key features of its black, target-style stock are adjustable. A Picatinny mounting rail with 25 MOA inclination allows for easy sighting in of the riflescope.

MODEL	CALIBER (TWIST RATE)	MAGAZINE CAPACITY	WEIGHT (kg)	LENGTH (mm)	BARREL LENGTH ("/mm)	BARREL PROFILE	SIGHTS	THREAD	COMPENSATOR	STOCK	FINISH	CHEEKPIECE	LOP (mm)	TRIGGER	TRIGGER PULL WEIGHT (N)
CZ 457 MDT	22 LR (1:16)	5	3,4	1010	20 / 525	Heavy, Fluted	No	1/2 x 20	Yes	Duralumin	Cerakote	Adjustable	335-360	Adjustable	11,1-14
CZ 457 LRP BLACK	22 LR (1:16)	5	3,9	1010	20 / 525	Heavy, Fluted	No	1/2 x 20	Yes	Beech	Soft-touch	Adjustable	351-382	Adjustable	11,1-14



## CZ 457 AT-ONE

The CZ 457 AT-ONE sport model from the CZ-USA range, which is held in high regard by our customers, is part of our worldwide offer of the CZ 457 series. This specially designed rifle is equipped with a varmint barrel with MATCH chamber and a solid laminated wood stock from the well-known American brand Boyds, which features an easily adjustable butt pad and comb. Classic sling loops are complemented by a quick-release loop with anchor holes on both sides of the stock.



## CZ 457 THUMBHOLE

The perfect combination of ergonomics and elegance. The defining characteristic of this model is its thumbhole stock made from high-strength, gray-brown laminated wood, which also features a unique integrated trigger guard. Its sophisticated stock design allows for comfortable use by both right- and left-handed shooters.

MODEL	CALIBER (TWIST RATE)	MAGAZINE CAPACITY	WEIGHT (kg)	LENGTH (mm)	BARREL LENGTH ("/ mm)	BARREL PROFILE	SIGHTS	THREAD	COMPENSATOR	STOCK	FINISH	CHEEKPIECE	LOP (mm)	TRIGGER	TRIGGER PULL WEIGHT (N)
<b>CZ 457 AT-ONE</b>	22 LR (1 : 16)	5	3,5	935-982	20 / 525	Heavy	No	1/2 × 20	No	Laminated	Varnish	Adjustable	313-360	Adjustable	11,1-14
<b>CZ 457 THUMBHOLE 16"</b>	22 LR (1 : 16)	5	3,2	885	16 / 412,5	Heavy	No	1/2 × 20	Yes	Laminated	Varnish	Yes	360	Adjustable	11,1-14
<b>CZ 457 THUMBHOLE 20"</b>	17 HMR (1 : 9)	5	3,6	997	20 / 525	Heavy	No	1/2 × 20	Yes	Laminated	Varnish	Yes	360	Adjustable	11,1-14
<b>CZ 457 THUMBHOLE 20"</b>	22 LR (1 : 16)	5	3,5	997	20 / 525	Heavy	No	1/2 × 20	Yes	Laminated	Varnish	Yes	360	Adjustable	11,1-14
<b>CZ 457 THUMBHOLE 20"</b>	22 WMR (1 : 16)	5	3,5	997	20 / 525	Heavy	No	1/2 × 20	Yes	Laminated	Varnish	Yes	360	Adjustable	11,1-14



## CZ 457 STAINLESS

A trail model created for those who appreciate the use of premium materials. Along with the many strengths of the CZ 457 series, this 22 LR caliber rifle features a modern digital camouflage pattern on its high comfort, soft-touch finished polymer stock and comes with a light profile, weather-resistant stainless steel barrel.



## CZ 457 SYNTHETIC

The main feature for this model is increased resistance to adverse environmental conditions. All metal components come with a high quality, anti-corrosion finish. Its ergonomically friendly, and extremely strong, polymer stock comes with a soft-touch finish and is resistant to moisture, cold and heat.



## CZ 457 SYNTHETIC SET

With an increased resistance to adverse weather conditions, this model is available as a basic version or as a set with a 3-9 × 42 riflescope developed especially for this series. The riflescope is sighted in at 50 meters and is securely attached on a durable, two-piece duralumin mount. Reliable and consistent shot groupings are ensured through tests carried out on all CZ centerfire rifles.

MODEL	CALIBER (TWIST RATE)	MAGAZINE CAPACITY	WEIGHT (kg)	LENGTH (mm)	BARREL LENGTH ("/ mm)	BARREL PROFILE	SIGHTS	THREAD	COMPENSATOR	STOCK	FINISH	CHEEKPIECE	LOP (mm)	TRIGGER	TRIGGER PULL WEIGHT (N)
<b>CZ 457 STAINLESS</b>	22 LR (1 : 16)	5	2,5	977	20 / 525	Light	No	1/2 × 20	No	Polymer	Soft-touch	No	356	Adjustable	11,1-14
<b>CZ 457 SYNTHETIC 16"</b>	22 LR (1 : 16)	5	2,3	865	16 / 412,5	Light	No	1/2 × 20	No	Polymer	Soft-touch	No	356	Adjustable	11,1-14
<b>CZ 457 SYNTHETIC 20"</b>	17 HMR (1 : 9), 22 LR (1 : 16), 22 WMR (1 : 16)	5	2,5	977	20 / 525	Light	No	1/2 × 20	No	Polymer	Soft-touch	No	356	Adjustable	11,1-14
<b>CZ 457 SYNTHETIC SET</b>	22 LR (1 : 16)	5	2,5	977	20 / 525	Light	No	1/2 × 20	No	Polymer	Soft-touch	No	356	Adjustable	11,1-14



## CZ 457 VARMINT SYNTHETIC **NEW**

A model created at the request of our customers. It's an ideal choice for accurate sport shooting and hunting at medium to longer distances, due to its heavy barrel and polymer stock with increased resistance to adverse weather conditions.



This model is also available as a left-handed version.

## CZ 457 VARMINT LH **NEW**



## CZ 457 VARMINT

A popular design with an American-style varnished stock and heavy 525 mm barrel, which makes it ideal for accurate sport shooting and hunting at medium to long distances. The proven 11 mm CZ dovetail is milled into the top of the receiver for attaching rifle scope ringmounts.



## CZ 457 MTR **MATCH CHAMBER**

A highly precise model with an extraordinarily comfortable stock made from premium walnut. The heavy, cold hammer forged match-grade barrel in 22 LR caliber is equipped with a MATCH chamber. Thanks to this feature, together with other innovations in the CZ 457 series, the CZ 457 MTR guarantees 15 mm groups at a distance of 50 m.

MODEL	CALIBER (TWIST RATE)	MAGAZINE CAPACITY	WEIGHT (kg)	LENGTH (mm)	BARREL LENGTH ("/mm)	BARREL PROFILE	SIGHTS	THREAD	COMPENSATOR	STOCK	FINISH	CHEEKPIECE	LOP (mm)	TRIGGER	TRIGGER PULL WEIGHT (N)
CZ 457 VARMINT SYNTHETIC 16"	17 HMR (1 : 9), 22 LR (1 : 16)	5	2,6	865	16 / 412,5	Heavy	No	1/2 × 20	No	Polymer	Soft-touch	No	356	Adjustable	11,1-14
CZ 457 VARMINT SYNTHETIC 20"	22 LR (1 : 16)	5	2,9	977	20 / 525	Heavy	No	1/2 × 20	No	Polymer	Soft-touch	No	356	Adjustable	11,1-14
CZ 457 VARMINT	17 HMR (1 : 9), 22 LR (1 : 16), 22 WMR (1 : 16)	5	3,3	981	20 / 525	Heavy	No	1/2 × 20	No	Walnut	Varnish	No	360	Adjustable	11,1-14
CZ 457 VARMINT LH	22 LR (1 : 16)	5	3,3	981	20 / 525	Heavy	No	1/2 × 20	No	Walnut	Varnish	No	360	Adjustable	11,1-14
CZ 457 MTR 16"	22 LR (1 : 16)	5	3,5	859	16 / 412,5	Heavy	No	1/2 × 20	No	Walnut	Oil	No	350	Adjustable	11,1-14
CZ 457 MTR 20"	22 LR (1 : 16)	5	3,5	976	20 / 525	Heavy	No	1/2 × 20	No	Walnut	Oil	No	350	Adjustable	11,1-14



## CZ 457 AMERICAN

A beautiful, modern example of a classic American sport shooting and hunting rimfire rifle. The varnished American-style stock is made from high quality walnut, with checkering on the grip that incorporates a fleur-de-lis motif. The light profile, cold hammer forged barrel is 630 mm long and has no sights.



This model is also available as a left-handed version.

## CZ 457 AMERICAN LH **NEW**

MODEL	CALIBER (TWIST RATE)	MAGAZINE CAPACITY	WEIGHT (kg)	LENGTH (mm)	BARREL LENGTH ("/mm)	BARREL PROFILE	SIGHTS	THREAD	COMPENSATOR	STOCK	FINISH	CHEEKPIECE	LOP (mm)	TRIGGER	TRIGGER PULL WEIGHT (N)
CZ 457 AMERICAN	17 HMR (1:9), 22 LR (1:16), 22 WMR (1:16)	5	3,0	1087	24 / 630	Light	No	1/2 x 20	No	Walnut	Varnish	No	360	Adjustable	11,1-14
CZ 457 AMERICAN LH	22 LR (1:16)	5	3,0	1087	24 / 630	Light	No	1/2 x 20	No	Walnut	Varnish	No	360	Adjustable	11,1-14



## CZ 457 JAGUAR XII

The CZ 457 JAGUAR XII is a modern version of the popular rimfire rifles from CZ. It features the longest barrel on offer (726 mm), as well as a tangent rear sight adjustable between 25 and 200 m, stock with a jaguar motif, and claw marks in place of traditional checkering. Standard accessories include a 10-round metal magazine.



This model is also available as a left-handed version.

## CZ 457 PREMIUM

The CZ 457 PREMIUM is a model that will impress all fans of classically shaped hunting rifles. Its premium walnut stock features a cheekpiece and decorative forend from high-grade material. The 630 mm light profile barrel has a 1/2 x 20 muzzle thread for the attachment of a suppressor. Aiming is quick and intuitive with its tangent rear sight and fiber optic front sight.

## CZ 457 PREMIUM LH



MODEL	CALIBER (TWIST RATE)	MAGAZINE CAPACITY	WEIGHT (kg)	LENGTH (mm)	BARREL LENGTH ("/mm)	BARREL PROFILE	SIGHTS	THREAD	COMPENSATOR	STOCK	FINISH	CHEEKPIECE	LOP (mm)	TRIGGER	TRIGGER PULL WEIGHT (N)
CZ 457 JAGUAR XII	22 LR (1:16)	10	3,3	1182	28 / 726	Light	Yes	1/2 x 20	No	Beech	Lak	Yes	360	Adjustable	11,1-14
CZ 457 PREMIUM	17 HMR (1:9), 22 LR (1:16), 22 WMR (1:16)	5	3,2	1085	24 / 630	Light	Yes	1/2 x 20	No	Walnut	Olej	Yes	360	Adjustable	11,1-14
CZ 457 PREMIUM LH	22 LR (1:16)	5	3,2	1085	24 / 630	Light	Yes	1/2 x 20	No	Walnut	Olej	Yes	360	Adjustable	11,1-14



## CZ 457 LUX

An accurate, safe, reliable and modern rimfire rifle with a classic European centerfire hunting rifle design. The varnished stock with cheekpiece is made of high-quality Turkish walnut and features laser-etched checkering on the grip. Traditional iron sights come as standard.



## CZ 457 TRAINING RIFLE XII

CZ rimfire rifles with the Training Rifle moniker have traditionally been the ideal firearm for novice shooters of all ages. In this case, it is all the more true thanks to the benefits of the CZ 457 series that significantly increase user safety, accuracy and the rifle's service life. Like the CZ 457 JAGUAR XII, the barrel on this model comes with a 12 groove bore.

MODEL	CALIBER (TWIST RATE)	MAGAZINE CAPACITY	WEIGHT (kg)	LENGTH (mm)	BARREL LENGTH ("/mm)	BARREL PROFILE	SIGHTS	THREAD	COMPENSATOR	STOCK	FINISH	CHEEKPIECE	LOP (mm)	TRIGGER	TRIGGER PULL WEIGHT (N)
CZ 457 LUX	17 HMR (1:9), 22 LR (1:16), 22 WMR (1:16)	5	2,9	1088	24 / 630	Light	Yes	1/2 x 20	No	Walnut	Varnish	Yes	360	Adjustable	11,1-14
CZ 457 TRAINING RIFLE XII	22 LR (1:16)	5	3,1	1085	24 / 630	Light	Yes	1/2 x 20	No	Beech	Varnish	Yes	360	Adjustable	11,1-14





1070-7012  
SPUHR SCOPE MOUNT 2PCS  
HP40-30 Ø 34 H30 MM  


5083-9057-01ND  
CZ 457 PICATINNY RAIL,  
BLACK

C0302-0003  
LEICA RIFLESCOPE  
PRS 5-30x56 I

5133-1200-01ND  
CZ 457 / CZ 512 MAG 22 LR,  
10 ROUND, STEEL

5133-1200-02ND  
CZ 457 / CZ 512 MAG 22 LR, 10 ROUND,  
POLYMER


1099-0001  
HARRIS BIPOD

**RECOMMENDED**  
**ACCESSORIES**



5083-9057-01ND  
CZ 457 PICATINNY RAIL,  
BLACK

C0302-0000  
MEOPTA RIFLESCOPE  
MEOSPORT R 3-15 x 50 RD SFP

1070-7011  
SPUHR SCOPE MOUNT 2PCS  
HP 30-25 Ø 30 H25, 4MM  


5133-1000-02ND  
CZ 457 / CZ 512 MAG 22 LR,  
5 ROUND, POLYMER

5133-1000-01ND  
CZ 457 / CZ 512 MAG 22 LR, 5 ROUND,  
STEEL

1081-7383  
TRIGATTI SLING LOOP  
(2 PCS IN PACKAGE)

C0315-0001  
CZ GAMEHAMMER RIFLE  
SLING, GREEN



MODEL	CALIBER (TWIST RATE)	MAGAZINE CAPACITY	WEIGHT (kg)	LENGTH (mm)	BARREL LENGTH ("/ mm)	BARREL PROFILE	SIGHTS	THREAD	COMPENSATOR	STOCK	FINISH	CHEEKPIECE	LOP (mm)	TRIGGER	TRIGGER PULL WEIGHT (N)
<b>CZ 457 CARBON</b>	22 LR (1 : 16)	5	2,15	977	20 / 525	Carbon fiber-wrapped steel	No	1/2 × 20	No	Polymer	Soft-touch	No	356	Adjustable	8–15
<b>CZ 457 MDT</b>	22 LR (1 : 16)	5	3,4	1010	20 / 525	Heavy, Fluted	No	1/2 × 20	Yes	Duralumin	Cerakote	Adjustable	335–360	Adjustable	11,1–14
<b>CZ 457 LRP BLACK</b>	22 LR (1 : 16)	5	3,9	1010	20 / 525	Heavy, Fluted	No	1/2 × 20	Yes	Beech	Soft-touch	Adjustable	351–382	Adjustable	11,1–14
<b>CZ 457 AT-ONE</b>	22 LR (1 : 16)	5	3,5	935–982	20 / 525	Heavy	No	1/2 × 20	No	Laminated	Varnish	Adjustable	313–360	Adjustable	11,1–14
<b>CZ 457 THUMBHOLE 16"</b>	22 LR (1 : 16)	5	3,2	885	16 / 412,5	Heavy	No	1/2 × 20	Yes	Laminated	Varnish	Yes	360	Adjustable	11,1–14
<b>CZ 457 THUMBHOLE 20"</b>	17 HMR (1 : 9)	5	3,6	997	20 / 525	Heavy	No	1/2 × 20	Yes	Laminated	Varnish	Yes	360	Adjustable	11,1–14
<b>CZ 457 THUMBHOLE 20"</b>	22 LR (1 : 16)	5	3,5	997	20 / 525	Heavy	No	1/2 × 20	Yes	Laminated	Varnish	Yes	360	Adjustable	11,1–14
<b>CZ 457 THUMBHOLE 20"</b>	22 WMR (1 : 16)	5	3,5	997	20 / 525	Heavy	No	1/2 × 20	Yes	Laminated	Varnish	Yes	360	Adjustable	11,1–14
<b>CZ 457 STAINLESS</b>	22 LR (1 : 16)	5	2,5	977	20 / 525	Light	No	1/2 × 20	No	Polymer	Soft-touch	No	356	Adjustable	11,1–14
<b>CZ 457 SYNTHETIC 16"</b>	22 LR (1 : 16)	5	2,3	865	16 / 412,5	Light	No	1/2 × 20	No	Polymer	Soft-touch	No	356	Adjustable	11,1–14
<b>CZ 457 SYNTHETIC 20"</b>	17 HMR (1 : 9), 22 LR (1 : 16), 22 WMR (1 : 16)	5	2,5	977	20 / 525	Light	No	1/2 × 20	No	Polymer	Soft-touch	No	356	Adjustable	11,1–14
<b>CZ 457 SYNTHETIC SET</b>	22 LR (1 : 16)	5	2,5	977	20 / 525	Light	No	1/2 × 20	No	Polymer	Soft-touch	No	356	Adjustable	11,1–14
<b>CZ 457 VARMINT SYNTHETIC 16"</b>	17 HMR (1 : 9), 22 LR (1 : 16)	5	2,6	865	16 / 412,5	Heavy	No	1/2 × 20	No	Polymer	Soft-touch	No	356	Adjustable	11,1–14
<b>CZ 457 VARMINT SYNTHETIC 20"</b>	22 LR (1 : 16)	5	2,9	977	20 / 525	Heavy	No	1/2 × 20	No	Polymer	Soft-touch	No	356	Adjustable	11,1–14
<b>CZ 457 VARMINT</b>	17 HMR (1 : 9), 22 LR (1 : 16), 22 WMR (1 : 16)	5	3,3	981	20 / 525	Heavy	No	1/2 × 20	No	Walnut	Varnish	No	360	Adjustable	11,1–14
<b>CZ 457 VARMINT LH</b>	22 LR (1 : 16)	5	3,3	981	20 / 525	Heavy	No	1/2 × 20	No	Walnut	Varnish	No	360	Adjustable	11,1–14
<b>CZ 457 MTR 16"</b>	22 LR (1 : 16)	5	3,5	859	16 / 412,5	Heavy	No	1/2 × 20	No	Walnut	Oil	No	350	Adjustable	11,1–14
<b>CZ 457 MTR 20"</b>	22 LR (1 : 16)	5	3,5	976	20 / 525	Heavy	No	1/2 × 20	No	Walnut	Oil	No	350	Adjustable	11,1–14
<b>CZ 457 AMERICAN</b>	17 HMR (1 : 9), 22 LR (1 : 16), 22 WMR (1 : 16)	5	3,0	1087	24 / 630	Light	No	1/2 × 20	No	Walnut	Varnish	No	360	Adjustable	11,1–14
<b>CZ 457 AMERICAN LH</b>	22 LR (1 : 16)	5	3,0	1087	24 / 630	Light	No	1/2 × 20	No	Walnut	Varnish	No	360	Adjustable	11,1–14
<b>CZ 457 JAGUAR XII</b>	22 LR (1 : 16)	10	3,3	1182	28 / 726	Light	Yes	1/2 × 20	No	Beech	Varnish	Yes	360	Adjustable	11,1–14
<b>CZ 457 PREMIUM</b>	17 HMR (1 : 9), 22 LR (1 : 16), 22 WMR (1 : 16)	5	3,2	1085	24 / 630	Light	Yes	1/2 × 20	No	Walnut	Oil	Yes	360	Adjustable	11,1–14
<b>CZ 457 PREMIUM LH</b>	22 LR (1 : 16)	5	3,2	1085	24 / 630	Light	Yes	1/2 × 20	No	Walnut	Oil	Yes	360	Adjustable	11,1–14
<b>CZ 457 LUX</b>	17 HMR (1 : 9), 22 LR (1 : 16), 22 WMR (1 : 16)	5	2,9	1088	24 / 630	Light	Ano	1/2 × 20	No	Walnut	Varnish	Ano	360	Adjustable	11,1–14
<b>CZ 457 TRAINING RIFLE XII</b>	22 LR (1 : 16)	5	3,1	1085	24 / 630	Light	Ano	1/2 × 20	No	Beech	Varnish	Ano	360	Adjustable	11,1–14







## SHOTGUNS CZ-USA FIELD SPORTS

Borrowing from the most popular firearms in the CZ-USA portfolio, this diverse range of shotguns exhibits excellent construction quality, reliability and user-friendliness. The traditional core offer is a proven range of semi-automatic and pump action shotgun models for hunting and sport shooting, for which a wide selection of interchangeable chokes is available. There's something for everyone on the following pages.



## CZ REDHEAD PREMIER

A high level, universal 12-gauge over/under shotgun designed for sport shooting and hunting. The precision CNC machined receiver is chrome plated, which gives it a shiny silver appearance. This model is equipped with ejectors for the fastest reloading times and a single trigger mechanism that allows you to choose the barrel firing order.



## CZ DRAKE

The CZ DRAKE is an over/under shotgun with an extremely advantageous price to performance ratio. CNC machining of components is also utilized for this model. Features include extractor operation, a single selectable trigger mechanism with the ability to choose the firing order of barrels, low weight due to the deletion of the mid-rib between barrels, and laser cut checkering for a slip-free grip.

## CZ SUPREME FIELD

An elegant over/under shotgun made for shooters who require more than just accuracy and reliability from their firearm. The beautiful CNC machined receiver is chrome plated, polished and hand engraved. The stock is made from carefully selected Turkish walnut (Grade III) and features a beautiful image. Additional features include ejectors and a single trigger mechanism that allows you to choose firing order of the barrels.



MODEL	CHAMBERING	CAPACITY	WEIGHT (kg)	LENGTH (mm)	BARREL LENGTH ("/mm)	STOCK	FINISH	CHEEKPIECE	LOP (mm)	CHOKE	EJECTOR/EXTRACTOR	1ST TRIGGER PULL WEIGHT (N)	2ND TRIGGER PULL WEIGHT (N)
CZ SUPREME FIELD	12/76	2	3,5	1160	28 / 710	Walnut	Varnish	No	355	Multi (5 pcs)	Ejectors	16	16
CZ REDHEAD PREMIER	12/76	2	3,5	1160	28 / 710	Walnut	Varnish	No	355	Multi (5 pcs)	Ejectors	19,5	15,5
CZ DRAKE	12/76	2	3,3	1160	28 / 710	Walnut	Varnish	No	355	Multi (5 pcs)	Extractor	19	17,5



## CZ 1012

A 12-gauge semi-automatic shotgun with a gasless inertia operating system for maximum reliability. Its user-friendliness was confirmed with a test of 5,000 shots without a drop of oil or any type of cleaning, while experiencing zero parts breakage or malfunctions. This model is equipped with a stock and forend made from Turkish walnut.



## CZ 1012 SYNTHETIC

A semi-automatic 12-gauge shotgun with a gasless inertia operating system, which provides maximum reliability with various types of ammunition, from light-recoiling target loads to powerful 3" magnums, and allows for a more relaxed maintenance schedule. A durable polymer stock makes it an ideal firearm for use in extremely inhospitable conditions. A wide range of chokes is also available for this model.



## CZ 612 HOME DEFENSE

A simple 12-gauge pump action shotgun with a durable polymer stock and reduced length, 47 cm barrel with fixed cylinder choke. The result is a compact, reliable and powerful firearm especially suited for home defense, while also being a great choice for competing in IPSC disciplines.



## CZ 612 FIELD

A reliable and affordable 12-gauge pump action shotgun for sport and hunting. The simple and durable pump reloading system has very low maintenance requirements, while the dual action bars make operation smooth and reliable. The stock is made of Turkish walnut and three interchangeable chokes come as part of its standard equipment.



MODEL	CHAMBERING	CAPACITY	WEIGHT (kg)	LENGTH (mm)	BARREL LENGTH ("/mm)	STOCK	FINISH	CHEEKPIECE	LOP (mm)	CHOKE	TRIGGER PULL WEIGHT (N)
<b>CZ 1012</b>	12/76	4	3,5	1285	28 / 710	Walnut	Varnish	Yes	355	Multi (5 pcs)	20
<b>CZ 1012 SYNTHETIC</b>	12/76	4	3,1	1285	28 / 710	Polymer	-	Yes	355	Multi (5 pcs)	20
<b>CZ 612 HOME DEFENSE</b>	12/76	4	2,6	970	18,5 / 470	Polymer	-	No	355	Fixed Cylinder	17
<b>CZ 612 FIELD</b>	12/76	4	2,8	1170	28 / 710	Walnut	Varnish	No	355	Multi (3 pcs)	17





## SEMI-AUTOMATIC RIFLES/CARBINES

The semi-automatic CZ SCORPION EVO 3 S1/S2 and CZ BREN 2 Ms series are among the world's elite in their respective categories. Their parameters and high level of performance make them an ideal choice for today's dynamic shooting sports, as well as maintaining shooting fitness and hobby shooting.



**ADVANCED  
SEMI-AUTOMATIC  
PISTOL CALIBER  
CARBINES FOR  
MODERN SPORTING  
DISCIPLINES**

The unique design of the CZ SCORPION EVO 3 S1/S2 series offers its users many benefits, such as light weight, advanced ergonomics, high accuracy, comfortable handling, ease of disassembly, impressive reliability and extremely fast reloading.



**CZ SCORPION  
EVO 3 S1/S2  
SERIES**



SEMI-AUTOMATIC

# CZ SCORPION EVO 3 S2 MICRO



A 9 × 19 caliber model based on the internationally popular CZ SCORPION EVO 3 pistol caliber carbine series. Despite a barrel length of only 140 mm, it retains high accuracy. The spiral three-arm flash hider effectively contributes to its impressive shooting comfort. A short forend made from highly durable aluminum alloy, with mounted hand stop, ensures a safe and reliable grip. Picatinny and M-LOK mounting interfaces are also at the user's disposal.



**HIGHLY COMPACT  
SEMI-AUTOMATIC  
FIREARM FOR PISTOL  
CALIBER CARTRIDGES**

MODEL	CALIBER	TWIST RATE / NUMBER OF GROOVES	MAGAZINE CAPACITY	BARREL LENGTH ("/ mm)	THREAD	SIGHTS	WEIGHT WITHOUT MAGAZINE (kg)	OVERALL LENGTH WITH STOCK FOLDED / UNFOLDED - FULLY EXTENDED (mm)	HEIGHT WITH FOLDED IRON SIGHTS, NO MAGAZINE (mm)	WIDTH WITH STOCK UNFOLDED / FOLDED (mm)	TRIGGER PULL WEIGHT (N)	FRAME
<b>CZ SCORPION EVO 3 S2 MICRO</b> <i>(with stock)</i>	9 × 19	1:10 / 6	–	5,5 / 140 ± 0,3	1/2" × 28 UNEF	Iron, Adjustable	2,6 ± 0,05	386 ± 10 / 584 – 634 ± 10	215 ± 5	60 ± 5 / 82 ± 5	48 ± 10	Fiberglass-reinforced polymer
<b>CZ SCORPION EVO 3 S2 MICRO</b> <i>(without stock)</i>	9 × 19	1:10 / 6	–	5,5 / 140 ± 0,3	1/2" × 28 UNEF	Iron, Adjustable	2,2 ± 0,05	386 ± 10 / 386 ± 10	215 ± 5	60 ± 5	48 ± 10	Fiberglass-reinforced polymer



## CZ SCORPION EVO 3 S1

A semi-automatic rifle chambered for pistol cartridges. Its simple design, extreme reliability, light weight, easy handling and accuracy make it the perfect fit for modern shooting sports and hobby shooting.



## CZ SCORPION EVO 3 S1 CARBINE COMP

The increased shooting comfort of this model is due to an effective two-chamber muzzle brake fitted on its 16" barrel and a long forend equipped with the M-LOK attachment system. It's a first-class firearm for modern sport and hobby shooting.



## CZ SCORPION EVO 3 S1 CARBINE

A highly accurate and reliable semi-automatic carbine with a 16" barrel that's fitted with an attractive faux-suppressor. Its long, fiberglass-reinforced polymer forend is equipped with a modern M-LOK attachment system for comfortable handling.

## CZ SCORPION EVO 3 S1 CARBINE COMP, 22 LR

NEW



The 22 LR version of the CZ SCORPION EVO 3 S1 CARBINE COMP retains all the advantages of this internationally popular series, with the added benefits of minimal recoil and virtually zero barrel wear. Its dynamic bolt is optimized for reliable operation with all types of cartridges. A cylindrical compensator is mounted on the muzzle.

MODEL	CALIBER	TWIST RATE / NUMBER OF GROOVES	MAGAZINE CAPACITY	BARREL LENGTH (in / mm)	THREAD	SIGHTS	WEIGHT WITHOUT MAGAZINE (kg)	OVERALL LENGTH WITH STOCK FOLDED / UNFOLDED - FULLY EXTENDED (mm)	HEIGHT WITH FOLDED IRON SIGHTS, NO MAGAZINE (mm)	WIDTH WITH STOCK UNFOLDED / FOLDED (mm)	TRIGGER PULL WEIGHT (N)	FRAME
CZ SCORPION EVO 3 S1	9 × 19	1:10 / 6	–	7,7 / 196 ± 1	M18 × 1	Iron, Adjustable	2,56 ± 0,05	420 / 615–665 ± 10	215 ± 5	60 / 82 ± 5	48 ± 10	Fiberglass-reinforced polymer
CZ SCORPION EVO 3 S1 CARBINE	9 × 19	1:10 / 6	–	16,2 / 412 ± 1	1/2" × 28 UNEF	Iron, Adjustable	3,05 ± 0,05	630 / 830–880 ± 10	215 ± 5	60 / 82 ± 5	48 ± 10	Fiberglass-reinforced polymer
CZ SCORPION EVO 3 S1 CARBINE COMP	9 × 19	1:10 / 6	–	16,2 / 412 ± 1	1/2" × 28 UNEF	Iron, Adjustable	3,05 ± 0,05	665 / 860–910 ± 10	215 ± 5	60 / 82 ± 5	48 ± 10	Fiberglass-reinforced polymer
CZ SCORPION EVO 3 S1 CARBINE COMP	22 LR	1:10 / 6	10	16 / 416 ± 0,3	1/2" × 28 UNEF	Iron, Adjustable	2,7 ± 0,05	665 / 860–910 ± 10	215 ± 5	60 / 82 ± 5	33 ± 5	Fiberglass-reinforced polymer





**RECOMMENDED  
ACCESSORIES**



A0216-0000  
ACRO WEAVER MOUNT  
QD 39MM 200519

B0101-0001  
AIMPOINT ACRO C-2  
RED DOT SIGHT

A0103-0001  
INFORCE WML TACT.  
FLASHLIGHT, 400 LM

3662-0800-0715ND  
CZ MAG 9 × 19, 10 ROUND

A0105-0002  
FRONT HAND GUARD  
FOR CZ SCORPION EVO 3,  
M-LOK



A man with a beard and glasses, wearing a patterned headband and a dark t-shirt, is holding a CZ Bren 2 Ms semi-automatic rifle. He is looking directly at the camera with a serious expression. The background is a dark shooting range with acoustic foam panels. The lighting is dramatic, highlighting the man's face and the rifle. The CZ logo is visible on the headband and the rifle's receiver.

## CUTTING-EDGE SEMI-AUTOMATIC RIFLES WITH IMPRESSIVE PARAMETERS

The CZ BREN 2 Ms semi-automatic platform is one of the most sophisticated on the global market. Its advantages include a simple design, extreme reliability, high accuracy, low weight and excellent ergonomics, as well as ambidextrous and easy to swap controls.

**CZ BREN 2 Ms**  
SERIES





## CZ BREN 2 Ms

The semi-automatic CZ BREN 2 Ms rifle is chambered in the popular 223 Rem. caliber. It features a short, interchangeable forend and 280 mm barrel. Despite its compact dimensions, it's a highly accurate firearm. Standard equipment includes mechanical sights.



## CZ BREN 2 Ms

This model combines the outstanding design features of the CZ BREN 2 Ms series with the impressive ballistic performance of the 7,62 × 39 cartridge. Standard equipment includes mechanical sights.



## CZ BREN 2 Ms CARBINE

The CZ BREN 2 Ms semi-automatic carbine is chambered in the popular 223 Rem. caliber. It comes with a long, interchangeable forend, 425 mm barrel and extended folding/telescopic shoulder stock with raised comb. Its design is optimized for accurate shooting, even at longer distances. Standard equipment includes mechanical sights.

MODEL	CALIBER	TWIST RATE / NUMBER OF GROOVES	MAGAZINE CAPACITY	BARREL LENGTH (" / mm)	THREAD	SIGHTS	WEIGHT WITHOUT MAGAZINE (kg)	OVERALL LENGTH WITH STOCK FOLDED / UNFOLDED - FULLY EXTENDED (mm)	HEIGHT WITH FOLDED IRON SIGHTS, NO MAGAZINE (mm)	WIDTH WITH STOCK UNFOLDED / FOLDED (mm)	TRIGGER PULL WEIGHT (N)	UPPER RECEIVER
CZ BREN 2 Ms 11"	223 Rem.	1:7/6	-	11/280 ± 1	1/2" × 28 UNEF	Iron, Folding, Adjustable	2,97 ± 0,05	577 / 762-807 ± 10	202 ± 5	80 / 104 ± 5	16 ± 4	7075 T6 aluminum alloy
CZ BREN 2 Ms 11"	7,62 × 39	1:9,45/4	-	11/280 ± 1	M14 × 1 LH	Iron, Folding, Adjustable	2,87 ± 0,05	577 / 762-807 ± 10	202 ± 5	80 / 104 ± 5	16 ± 4	7075 T6 aluminum alloy
CZ BREN 2 Ms CARBINE	223 Rem.	1:7/6	-	16,5/425 ± 1	1/2" × 28 UNEF	Iron, Folding, Adjustable	3,45 ± 0,05	719 / 909-980 ± 10	202 ± 5	80 / 104 ± 5	16 ± 4	7075 T6 aluminum alloy





**RECOMMENDED  
ACCESSORIES**

A0201-0017  
AIMPOINT DUTY RDS  
2 MOA RED DOT SIGHT

A0201-0018  
AIMPOINT MAGNIFIER  
3×MAG-C

3722-3500-6503ND  
CZ MAG 5,56 × 45, 10 ROUND





**ACCESSORIES  
PISTOLS**



**1091-1341-03**  
CZ 75 SP-01 AL MAGAZINE BASE PLATE – RED

**1091-1341-04**  
BLUE

**1091-1341-02**  
SILVER

**1091-1341-01**  
BLACK



**1091-1342-03**  
CZ TS AL MAGAZINE BASE PLATE – RED

**1091-1342-04**  
BLUE

**1091-1342-02**  
SILVER

**1091-1342-01**  
BLACK



**1091-1345-05**  
CZ SHADOW 2 ALU BASE PLATE FOR MAGWELL – PURPLE

**1091-1345-11**  
BLACK

**1091-1345-12**  
SILVER

**1091-1345-14**  
BLUE



**1091-1148-01**  
CZ TS WIDE MAGWELL – BLACK

**1091-1148-02**  
SILVER

**1091-1148-03**  
RED

**1091-1148-04**  
BLUE

**1091-1148-05**  
ORANGE



**1091-2280-01**  
CZ SHADOW 2 MAGWELL – BLACK (HARD ELOX)

**1091-2280-03**  
RED

**1091-2280-05**  
PURPLE

**1091-2280-12**  
SILVER

**1091-2280-14**  
BLUE

**B0306-0001**  
CZ SHADOW 2 COMPACT FLAT ALU BASE PLATE – BLUE

**B0306-0002**  
BLACK

**B0306-0003**  
RED

**B0306-0004**  
GREEN

**B0306-0005**  
PURPLE

**B0306-0006**  
SILVER



**B0306-0007**  
CZ SHADOW 2 ALU +2 BASE PLATE – BLUE

**B0306-0008**  
BLACK

**B0306-0009**  
RED

**B0306-0010**  
GREEN

**B0306-0011**  
PURPLE

**B0306-0012**  
SILVER



**B0305-0000**  
CZ SHADOW 2 COMPACT ALU MAGAZINE RELEASE BUTTON – BLUE

**B0305-0001**  
BLACK

**B0305-0002**  
RED

**B0305-0003**  
GREEN

**B0305-0004**  
PURPLE

**B0305-0010**  
SILVER



**0470-0080-1604ND**  
SLIDE RELEASE PIN FOR CZ TS 2



**1091-2180-05**  
CZ SHADOW 2 GRIPS – PURPLE (HARD ANODIZED)

**1091-2180-11**  
BLACK (HARD ANODIZED)

**1091-2180-12**  
SILVER (HARD ANODIZED)

**1091-2180-14**  
BLUE (HARD ANODIZED)



**B0105-0013**  
CZ TS 2 LONG GRIPS – BLACK

**B0105-0024**  
RED

**B0105-0015**  
BLUE

**B0105-0014**  
GREEN

**B0105-0016**  
GREY



**B0105-0022**  
CZ TS 2 SHORT GRIPS – GREEN

**B0105-0011**  
BLACK

**B0105-0023**  
RED

**B0105-0012**  
BLUE

**B0105-0025**  
SILVER



**B0305-0008**  
CZ SHADOW 2 COMPACT GRIPS – GREEN

**B0305-0005**  
BLUE

**B0305-0006**  
BLACK

**B0305-0007**  
RED

**B0305-0011**  
SILVER

**B0305-0009**  
PURPLE



**1091-1352**  
CZ TS 2 THUMBREST 20° ANGLE (RACING GREEN)

**1091-1353**  
CZ TS 2 THUMBREST 48° ANGLE (ORANGE)

**1091-1354**  
CZ TS 2 THUMBREST SHORTENED 20,5° ANGLE (DEEP BRONZE)



**1091-1320**  
SA | DA HAMMER



**1091-1321**  
SA HAMMER (CZ SHADOW, CZ TS)



**1091-1337**  
CZ 75 SP-01 / CZ SHADOW / CZ TS / CZ TS 2 SAFETY SET (L) WIDE



**1091-1338**  
CZ 75 SP-01 / CZ SHADOW 2 / CZ TS / CZ TS 2 SAFETY SET (R) WIDE



**1091-1312-01**  
CZ TS 2 TRIGGER, BLACK



**0471-0081-1606ND**  
CZ SHADOW 2 / CZ TS FLAT SLIDE RELEASE



**0423-2500-02ND**  
CZ 75 SP-01 / CZ SHADOW 2 / CZ TS / CZ TS 2 SAFETY SET (R)



**1091-1224**  
CZ 75 SP-01 SHADOW / CZ 75 SP-01 SHADOW ORANGE FLAT SAFETY SET

**1091-1336**  
CZ 75 SP-01 SHADOW / CZ 75 SP-01 SHADOW ORANGE SAFETY SET – RIGHT-HANDERS



**1091-1335**  
CZ SHADOW 2 / CZ SHADOW 2 COMPACT / CZ TS / CZ TS 2 WIDE SAFETY SET



**ACCESSORIES  
PISTOLS**



5125-1407-01  
CONCEALED CARRY PISTOL BAG, BLACK  
5125-1407-02  
GREY



1091-1420-01  
CZ SHADOW 2 OPTICS-READY  
PLATE - TRIJICON RMR/SRO

1091-1420-06  
CZ SHADOW 2 OR PLATE -  
SHIELD RMS

1091-1420-04  
CZ SHADOW 2 OR PLATE -  
VENOM/DOCTER

B0101-0002  
CZ SHADOW 2 OPTICS-READY  
PLATE - ACRO



0422-0710-14ND  
CZ 75 SP-01 / CZ SHADOW 2  
9 x 19 MAGAZINE, AFC

0422-0710-15ND  
CZ SP-01 / CZ SHADOW 2  
MAGAZINE, 19 ROUND, AFC

0422-0710-17ND  
CZ 75 / CZ 75 SP-01 SHADOW /  
CZ SHADOW 2 / CZ 75  
MAGAZINE, 19 ROUND

0472-3710-0706ND  
CZ 75 TS 9 x 19 MAGAZINE, 20 ROUND



0472-3710-0713ND  
CZ TS 2 RACING GREEN MAGAZINE,  
20 ROUND, GREEN

0472-3710-0712ND  
CZ TS 2 DEEP BRONZE MAGAZINE,  
20 ROUND, BLACK  
AL BASE PLATE (MAGWELL)



0422-0710-16ND  
CZ 75 / CZ 75 SP-01 / CZ SHADOW 2  
NICKEL MAGAZINE, 19 ROUND



0472-3710-1617ND  
CZ TS / CZ TS 2 40 S&W MAGAZINE,  
17 ROUND



5125-1048  
CZ 75 MAGAZINE POUCH



5125-1049  
CZ 75 DOUBLE MAGAZINE POUCH



B0115-0057  
CZ SHADOW 2 COMPACT FROGY  
OWB KYDEX HOLSTER (R)

B0115-0045  
CZ SHADOW 2 COMPACT  
OWB KYDEX HOLSTER, 1/2 SWG (R)

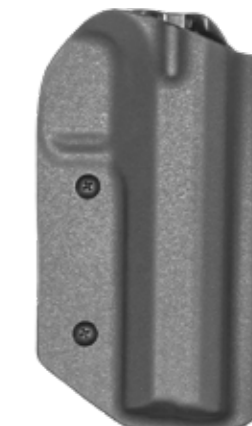


B0115-0058  
CZ SHADOW 2 COMPACT SHARKY  
IWB KYDEX HOLSTER (R)



5125-1200  
CZ TS 2 OWB KYDEX HOLSTER (R)

5125-1201  
CZ TS 2 OWB KYDEX HOLSTER (L)



5125-1202  
CZ TS 2 KYDEX SPORT HOLSTER (TEKLOK) (R)

5125-1203  
CZ TS 2 KYDEX SPORT HOLSTER (TEKLOK) (L)



5118-0005-01  
CZ SHADOW 2 NANUK CASE -  
BLACK

5118-0005-02  
OLIVE

5118-0005-03  
TAN

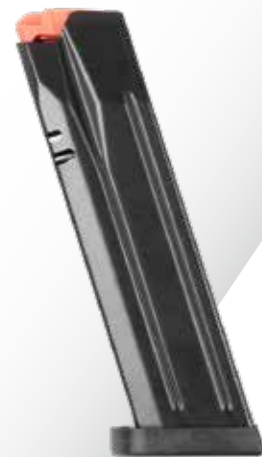
5118-0005-04  
GRAPHITE

5118-0005-05  
SILVER

5118-0005-06  
ORANGE



**ACCESSORIES  
PISTOLS**



0722-0030-10ND  
CZ P-09 / CZ P-10 F  
9 × 19 MAGAZINE, 19 ROUND, AFC

0532-0030-10ND  
CZ P-10 F 45 AUTO  
45 AUTO MAGAZINE, 13 ROUND

0722-0030-05ND  
CZ P-09 / CZ P-10 F  
9 × 19 MAGAZINE, 10 ROUND, AFC

0552-0030-10ND  
CZ P-09 / CZ P-10 F  
9 × 19 MAGAZINE, 15 ROUND, AFC, WH

0552-0030-04ND  
CZ P-10 C / CZ P-07  
9 × 19 MAGAZINE, 10 ROUND, AFC, WH

0552-0030-06ND  
CZ P-10 C 9 × 19 MAGAZINE, 17 ROUND  
(CAN BE USED FOR CZ P-07)



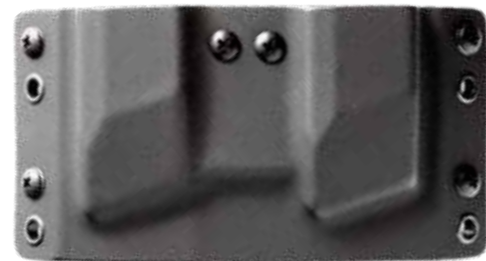
1081-0171  
CZ P-10 GIS PSR 9/7 SUPPRESSOR  
(STANDARD)

B1081-0136M  
CZ P-10 B&T STANDARD SUPPRESSOR  
9 MM SD-988667 1/2"-28



5125-1808  
CZ P-10 M IWB KYDEX  
MAGAZINE POUCH

5125-1809  
CZ P-10 M OWB KYDEX  
MAGAZINE POUCH



5125-1047  
CZ P-07/09 KYDEX DOUBLE MAGAZINE POUCH

5125-1810  
CZ P-10 M OWB KYDEX DOUBLE MAGAZINE POUCH



5118-0004-01  
CZ P-10 NANUK CASE –  
BLACK

5118-0004-02  
OLIVE

5118-0004-03  
TAN

5118-0004-04  
GRAPHITE

5118-0004-05  
SILVER



1091-1410-08  
CZ P-10 OPTICS-READY ACRO PLATE

1091-1410-01  
CZ P-10 OPTICS-READY PLATE –  
RMR/SRO

1091-1410-03  
CZ P-10 OR PLATE – DOCTER/VENOM

1091-1410-09  
CZ P-10 OR PLATE, C-MORE



5125-1801  
CZ P-10 M IWB KYDEX HOLSTER, 1/2 SWG (R)

5125-1802  
CZ P-10 M IWB KYDEX HOLSTER, 1/2 SWG (L)

B0115-0031  
CZ P-10 S IWB KYDEX HOLSTER,  
FULL SWG 149 FLUSHCLIP (R)

B0115-0032  
CZ P-10 C IWB KYDEX HOLSTER,  
FULL SWG 149 FLUSHCLIP (R)

B0115-0037  
CZ P-10 M IWB KYDEX HOLSTER,  
FULL SWG 149 FLUSHCLIP (R)



5125-1807  
CZ P-10 M TRIGGER GUARD



5125-1230  
CZ P-10 F, 45 AUTO OWB KYDEX HOLSTER, NO SWG (R)

5125-1231  
CZ P-10 F, 45 AUTO OWB KYDEX HOLSTER, NO SWG (L)

5125-1232  
CZ P-10 F, 45 AUTO OWB KYDEX HOLSTER, 1/2 SWG (R)

5125-1234  
CZ P-10 F, 45 AUTO OWB KYDEX HOLSTER, FULL SWG (R)

5125-1235  
CZ P-10 F, 45 AUTO OWB KYDEX HOLSTER, FULL SWG (L)



5125-1811  
CZ P-10 M EXTENDED TRIGGER GUARD

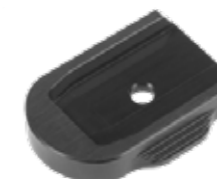


5125-1803  
CZ P-10 M OWB KYDEX HOLSTER (R)

5125-1804  
CZ P-10 M OWB KYDEX HOLSTER (L)



0580-0323-02  
CZ P-10 M MAGAZINE RELEASE  
LEFT SIDE



1091-1360  
CZ P-10 AL ENLARGED MAGAZINE  
BASE PLATE

1091-1380-01  
CZ P-10 ANODIZED AL TRIGGER –  
BLACK

1091-1380-02  
RED

1091-1380-03  
BLUE

1091-1380-04  
GREEN

1091-1390-01  
CZ P-10 MICRO AL TRIGGER –  
BLACK

1091-1390-02  
RED

1091-1390-03  
BLUE

1091-1390-04  
GREEN



1091-1377-01  
CZ P-10 S, C, F 9 × 19  
MAGAZINE RELEASE – BLACK

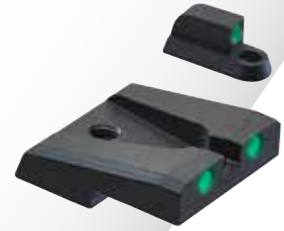
1091-1377-02  
RED

1091-1377-03  
BLUE

1091-1377-04  
GREEN



# ACCESSORIES PISTOLS



**0721-0700-03ND**  
STEEL TRITIUM SIGHTS H3 (5,50 MM)

**0721-0700-02ND**  
STEEL TRITIUM SIGHTS H2 (5,50 MM)

**0721-0700-04ND**  
STEEL TRITIUM SIGHTS H4 (6,00 MM)



**1081-0101**  
CZ SHADOW 2  
ADJUSTABLE REAR SIGHT



**1081-0105**  
CZ TS ORANGE  
ADJUSTABLE REAR SIGHT



**1081-0220**  
CZ TS 2  
FULLY ADJUSTABLE REAR SIGHT



**1091-1250-01**  
FRONT SIGHT WITH DOT H1 5,25 MM

**1091-1250-02**  
FRONT SIGHT WITH DOT H2 5,50 MM

**1091-1250-03**  
FRONT SIGHT WITH DOT H3 5,75 MM

**1091-1250-04**  
FRONT SIGHT WITH DOT H4 6,00 MM

**1091-1250-05**  
FRONT SIGHT WITH DOT H5 6,25 MM

**1091-1250-06**  
FRONT SIGHT WITH DOT H6 6,50 MM

**1091-1250-07**  
FRONT SIGHT WITH DOT H7 6,75 MM

**1091-1250-08**  
FRONT SIGHT WITH DOT H8 7,00 MM

**1091-1250-09**  
FRONT SIGHT WITH DOT H9 7,50 MM

**1091-1250-10**  
FRONT SIGHT WITH DOT H10 8,00 MM

**1091-1250-11**  
FRONT SIGHT WITH DOT H11 8,50 MM



**1091-1251-01**  
CHECKERED FRONT SIGHT H1 5,25 MM

**1091-1251-02**  
CHECKERED FRONT SIGHT H2 5,50 MM

**1091-1251-03**  
CHECKERED FRONT SIGHT H3 5,75 MM

**1091-1251-04**  
CHECKERED FRONT SIGHT H4 6,00 MM

**1091-1251-05**  
CHECKERED FRONT SIGHT H5 6,25 MM

**1091-1251-06**  
CHECKERED FRONT SIGHT H6 6,50 MM

**1091-1251-07**  
CHECKERED FRONT SIGHT H7 6,75 MM (UNI ADAPT.)

**1091-1251-08**  
CHECKERED FRONT SIGHT H8 7,00 MM

**1091-1251-09**  
CHECKERED FRONT SIGHT H9 7,50 MM

**1091-1251-10**  
CHECKERED FRONT SIGHT H10 8,00 MM

**1091-1251-11**  
CHECKERED FRONT SIGHT H11 8,50 MM



**1091-1252-01**  
FIBER OPTIC FRONT SIGHT H1 1,5x5,25 MM

**1091-1252-02**  
FIBER OPTIC FRONT SIGHT H2 1,5x5,50 MM

**1091-1252-03**  
FIBER OPTIC FRONT SIGHT H3 1,5x5,75 MM

**1091-1252-04**  
FIBER OPTIC FRONT SIGHT H4 1,5x6,00 MM

**1091-1252-05**  
FIBER OPTIC FRONT SIGHT H5 1,5x6,25 MM

**1091-1252-06**  
FIBER OPTIC FRONT SIGHT H6 1,5x6,50 MM

**1091-1252-07**  
FIBER OPTIC FRONT SIGHT H7 1,5x6,75 MM

**1091-1252-08**  
FIBER OPTIC FRONT SIGHT H8 1,5x7,00 MM

**1091-1252-09**  
FIBER OPTIC FRONT SIGHT H9 1,5x7,50 MM

**1091-1252-10**  
FIBER OPTIC FRONT SIGHT H10 1,5x8,00 MM

**1091-1252-11**  
FIBER OPTIC FRONT SIGHT H11 1,5x8,50 MM



**1091-1253-01**  
FIBER OPTIC FRONT SIGHT H1 1,5x5,25 MM

**1091-1253-02**  
FIBER OPTIC FRONT SIGHT H2 1,5x5,50 MM

**1091-1253-03**  
FIBER OPTIC FRONT SIGHT H3 1,5x5,75 MM

**1091-1253-04**  
FIBER OPTIC FRONT SIGHT H4 1,5x6,00 MM

**1091-1253-05**  
FIBER OPTIC FRONT SIGHT H5 1,5x6,25 MM

**1091-1253-06**  
FIBER OPTIC FRONT SIGHT H6 1,5x6,50 MM

**1091-1253-07**  
FIBER OPTIC FRONT SIGHT H7 1,5x6,75 MM

**1091-1253-08**  
FIBER OPTIC FRONT SIGHT H8 1,5x7,00 MM

**1091-1253-09**  
FIBER OPTIC FRONT SIGHT H9 1,5x7,50 MM

**1091-1253-10**  
FIBER OPTIC FRONT SIGHT H10 1,5x8,00 MM

**1091-1253-11**  
FIBER OPTIC FRONT SIGHT H11 1,5x8,50 MM

FRONT SIGHT HEIGHT	FRONT SIGHT WITH DOT *	FRONT SIGHT WITHOUT DOT *	FIBER OPTIC FRONT SIGHT 1 MM **	FIBER OPTIC FRONT SIGHT 1.5 MM **
5,25 mm	1091-1250-01	1091-1251-01	1091-1252-01	1091-1253-01
5,5 mm	1091-1250-02	1091-1251-02	1091-1252-02	1091-1253-02
5,75 mm	1091-1250-03	1091-1251-03	1091-1252-03	1091-1253-03
6 mm	1091-1250-04	1091-1251-04	1091-1252-04	1091-1253-04
6,25 mm	1091-1250-05	1091-1251-05	1091-1252-05	1091-1253-05
6,5 mm	1091-1250-06	1091-1251-06	1091-1252-06	1091-1253-06
6,75 mm	1091-1250-07	1091-1251-07	1091-1252-07	1091-1253-07
7 mm	1091-1250-08	1091-1251-08	1091-1252-08	1091-1253-08
7,5 mm	1091-1250-09	1091-1251-09	1091-1252-09	1091-1253-09
8 mm	1091-1250-10	1091-1251-10	1091-1252-10	1091-1253-10
8,5 mm	1091-1250-11	1091-1251-11	1091-1252-11	1091-1253-11

\* CZ P-07, CZ P-09, CZ 75 COMPACT, CZ 75 D COMPACT, CZ 75, CZ 75 B Ω, CZ 85, CZ 97, CZ SP-01, CZ 75 SP-01 TACTICAL, CZ SHADOW, CZ 75 SP-01 PHANTOM, CZ 75 TS, CZ 75 TS CZECHMATE,

\*\* CZ 75 COMPACT, CZ 75 D COMPACT, CZ 75, CZ 75 B Ω, CZ 85, CZ 97, CZ SP-01, CZ 75 SP-01 TACTICAL, CZ SHADOW, CZ 75 SP-01 PHANTOM, CZ 75 TS, CZ 75 TS CZECHMATE

	REAR SIGHT HEIGHT	DEFENDER REAR SIGHT WITH DOT	DEFENDER REAR SIGHT WITHOUT DOT	TARGET REAR SIGHT WITH DOT	TARGET REAR SIGHT WITHOUT DOT	FIBER OPTIC REAR SIGHT
CZ P-07 / CZ P-09	7,3 mm	1091-1260	1091-1263	1091-1266	1091-1269	1091-1272
CZ 75 / CZ 85 / CZ SP-01	8,3 mm	1091-1261	1091-1264	1091-1267	1091-1270	1091-1273
CZ 75 SP-01 SHADOW	10 mm	1091-1262	1091-1265	1091-1268	1091-1271	1091-1274

	SIGHT HEIGHT	WITH 1 MM FIBER OPTIC	WITH 1,5 MM FIBER OPTIC	TRITIUM FRONT SIGHT	TRITIUM REAR SIGHT
CZ P-07 / CZ P-09	5,5 mm	1091-1282-02	1091-1283-02	0720-0600-06ND	0720-0690-01ND
CZ P-07 / CZ P-09	5,75 mm	1091-1282-03	1091-1283-03	0720-0600-07ND	0720-0690-01ND
CZ P-07 / CZ P-09	6 mm	1091-1282-04	1091-1283-04	0720-0600-08ND	0720-0690-01ND



**ACCESSORIES  
PISTOLS**



**3660-0023**  
INFORCE WILD 1 TACTICAL  
FLASHLIGHT

**3660-0024**  
INFORCE WILD 2 TACTICAL  
FLASHLIGHT



**B0103-0007**  
SUREFIRE X300U-A FLASHLIGHT

**B0103-0008**  
SUREFIRE X300T-A FLASHLIGHT

**B0103-0009**  
SUREFIRE X300T-B FLASHLIGHT



**B0103-0001**  
STREAMLIGHT TLR-7 FLASHLIGHT A SML69424

**B0103-0002**  
STREAMLIGHT TLR-8 FLASHLIGHT A (RED LASER)

**B0103-0003**  
STREAMLIGHT TLR-8 G FLASHLIGHT (GREEN LASER)

**B0103-0004**  
STREAMLIGHT TLR-1 HL FLASHLIGHT SML69260

**B0103-0005**  
STREAMLIGHT TLR-1 FLASHLIGHT S SML69210

**B0103-0006**  
STREAMLIGHT TLR-9 FLEX FLASHLIGHT SML69464



**3700-7801**  
TRIJICON SRO - RED DOT SIGHT, 1 MOA

**3700-7800**  
TRIJICON SRO - RED DOT SIGHT, 2,5 MOA

**3700-7802**  
TRIJICON SRO - RED DOT SIGHT, 5 MOA



**1091-1391**  
SHIELD RMS - RED DOT SIGHT - DURALUMIN



**3700-7700**  
TRIJICON RMR - RED DOT SIGHT



**B0101-0001**  
AIMPOINT ACRO C-2 -  
RED DOT SIGHT

**ACCESSORIES  
CENTERFIRE RIFLES**



**1070-7010**  
SPUHR 2-PIECE MOUNT,  
1" DIAMETER, 1" HEIGHT

**1070-7011**  
SPUHR 2-PIECE MOUNT,  
30 MM DIAMETER, 1" HEIGHT

**1070-7012**  
SPUHR 2-PIECE MOUNT,  
34 MM DIAMETER, 1,18" HEIGHT



**1070-7013**  
SPUHR ISMS 2-PIECE MOUNT,  
30 MM DIAMETER, 1" HEIGHT

**1070-7014**  
SPUHR ISMS 2-PIECE MOUNT,  
34 MM DIAMETER, 1" HEIGHT



**C0300-0004**  
CZ 600 2-PIECE REMINGTON MOUNT,  
1" DIAMETER, 30 MM HEIGHT

**C0300-0005**  
2-PIECE MOUNT, 30 MM DIAMETER,  
34 MM HEIGHT

**C0300-0006**  
2-PIECE MOUNT, 34 MM DIAMETER,  
34 MM HEIGHT



**C0300-0010**  
CZ 600 MINI ONE-PIECE WEAVER MOUNT,  
30 MM DIAMETER, 30 MM HEIGHT

**C0300-0011**  
MEDIUM 30 MM DIAMETER, 34 MM HEIGHT

**C0300-0012**  
MEDIUM 34 MM DIAMETER, 34 MM HEIGHT

**C0300-0013**  
LONG 30 MM DIAMETER, 34 MM HEIGHT

**C0300-0014**  
LONG 34 MM DIAMETER, 34 MM HEIGHT

**C0300-0017**  
CZ 600 WEAVER RAIL FOR DURALUMIN RECEIVER - MEDIUM

**C0300-0018**  
CZ 600 WEAVER RAIL FOR DURALUMIN RECEIVER - LONG



**C0300-0003**  
CZ 600 LONG PICATINNY RAIL, 0 MOA

**C0300-0001**  
CZ 600 MEDIUM PICATINNY RAIL, 0 MOA

**C0300-0002**  
CZ 600 MEDIUM PICATINNY RAIL, 25 MOA

**C0300-0000**  
CZ 600 SHORT PICATINNY RAIL, 0 MOA



**C0300-0007**  
CZ 600 2-PIECE WEAVER MOUNT,  
1" DIAMETER, 30 MM HEIGHT

**C0300-0008**  
2-PIECE MOUNT, 30 MM DIAMETER, 34 MM HEIGHT

**C0300-0009**  
2-PIECE MOUNT, 34 MM DIAMETER, 34 MM HEIGHT



**C0300-0015**  
CZ 600 ONE-PIECE MEDIUM REMINGTON  
MOUNT, 30 MM DIAMETER, 34 MM HEIGHT

**C0300-0016**  
MEDIUM 34 MM DIAMETER, 34 MM HEIGHT

**1070-7016**  
SPUHR RED DOT SIGHT ADAPTER -  
TRIJICON RMR MOUNT

**1070-7015**  
SPUHR RED DOT SIGHT ADAPTER -  
DELTA POINT MOUNT





**ACCESSORIES  
CENTERFIRE RIFLES**



**C0307-0004M**  
SUPPRESSOR FOR CZ 600 AU2001-B  
RADIEN 223 / 25, 15 x 1, BLACK

**C0307-0005M**  
SUPPRESSOR FOR CZ 600 AU2006-B  
RADIEN 30, 15 x 1, BLACK

**C0307-0006M**  
SUPPRESSOR FOR CZ 600 AU2007-B  
RADIEN 30, 18 x 1, BLACK

**C0307-0007M**  
SUPPRESSOR FOR CZ 600 AU2101-B  
RADIEN 9,3 MM, 15 x 1, BLACK



**C0302-0000**  
MEOPTA MEOSPORT R 3-15 x 50 RD SFP RIFLESCOPE

**C0302-0001**  
LEICA MAGNUS 1-6.3 x 24 I (L-3D) RIFLESCOPE

**C0302-0002**  
LEICA FORTIS 6 2.5-15 02 x 56 I (L-4A) RIFLESCOPE

**C0302-0003**  
LEICA PRS 5-30 x 56 I RIFLESCOPE



**6000-7202-01ND**  
CZ 600 TRIGGER GUARD  
FOR WOOD STOCK



**A0310-0028**  
LONG CLEANING ROD - CARBON  
FIBER Ø 5 L=910MM UNC 8-32



**C0310-0000**  
223 REM. CLEANING BRUSH SET



**6000-0010-01ND**  
M15 x 1 THREAD PROTECTOR,  
LIGHT PROFILE BARREL

**6000-0010-04ND**  
M15 x 1 THREAD PROTECTOR,  
SEMI-HEAVY PROFILE BARREL

**6000-0010-08ND**  
M18 x 1 THREAD PROTECTOR,  
HEAVY PROFILE BARREL



**6000-3322-01ND**  
CZ 600 PLASTIC BOLT KNOB



**6000-3320-02ND**  
CZ 600 WOOD BOLT KNOB



**6000-3320-03ND**  
CZ 600 RANGE DURALUMIN  
BOLT KNOB



**6000-3320-51ND**  
CZ 600 TRAIL DURALUMIN  
BOLT KNOB



**6002-9000-01ND**  
CZ 600 CENTERFIRE RIFLE TOOLS



**6003-4000-6401ND**  
CZ 600 MAG 223 REM., 5 ROUND

**6003-4000-7301ND**  
CZ 600 MAG 7,62 x 39, 5 ROUND



**6003-4000-5301ND**  
CZ 600 MAG 308 WIN., 6 MM CREEDMOOR,  
6,5 CREEDMOOR - 5 ROUND /  
6,5 PRC - 3 ROUND

**6003-4500-5301ND**  
CZ 600 MAG 308 WIN., 6 MM CREEDMOOR,  
6,5 CREEDMOOR, 243 WIN. - 10 ROUND /  
6,5 PRC - 6 ROUND



**6003-4000-6901ND**  
CZ 600 MAG 30-06 SPRING.,  
8 x 57 IS - 5 ROUND /  
300 WIN. MAG. - 3 ROUND



**6003-4500-5301ND**  
CZ 600 MAG 308 WIN., 6 MM CREEDMOOR,  
6,5 CREEDMOOR, 243 WIN. - 10 ROUND /  
6,5 PRC - 6 ROUND



**ACCESSORIES  
CENTERFIRE RIFLES**



5120-0600  
CZ PREMIUM RIFLE BAG – BROWN



5120-0700  
CZ PREMIUM RIFLE BAG – GREEN



5500-2990-01ND  
TRIGATTI SLING STUD FOR SLING  
LOOP ON WOOD STOCK



1081-7383  
TRIGATTI SLING LOOP  
(2 PCS IN PACKAGE)



1002-4100-05  
ATI SLING LOOP ON RIFLE SLING



5812-1293-04ND  
CZ 457 / CZ 600 SLING LOOP  
FOR WOOD STOCKS



545130060481  
MUZZLE BRAKE FOR M18 x 1 THREAD,  
ONLY FOR CZ TSR



C0315-0000  
CZ GAMEHAMMER RIFLE SLING – BLACK  
C0315-0001  
CZ GAMEHAMMER RIFLE SLING – GREEN  
C0315-0002  
CZ SAUENHAMMER RIFLE SLING – ORANGE



5120-0110-01  
CZ RIFLE SLING, NYLON / RUBBER – GREEN



5120-0110-02  
CZ RIFLE SLING, NYLON / RUBBER – BROWN



5120-0110-03  
CZ RIFLE SLING, NYLON / RUBBER – ORANGE



5120-0110-04  
CZ RIFLE SLING, TWEED / RUBBER – TWEED



5120-0110-11  
CZ RIFLE SLING, LEATHER / RUBBER – LIGHT BROWN



5120-0110-12  
CZ RIFLE SLING, LEATHER / RUBBER – DARK BROWN



5120-0110-09  
CZ RIFLE SLING, NYLON / RUBBER – BLACK



5120-0110-05  
CZ RIFLE SLING, NYLON / RUBBER – CAMOUFLAGE



**ACCESSORIES  
RIMFIRE RIFLES**



5133-1000-01ND  
CZ 455 / CZ 457 / CZ 512  
22 LR METAL MAGAZINE, 5 ROUND



5073-1000-8802ND  
CZ 455 / CZ 457 / CZ 512  
22 WMR / 17 HMR DURABLE  
POLYMER MAGAZINE, 5 ROUND



5133-1000-02ND  
CZ 455 / CZ 457 / CZ 512  
22 LR DURABLE POLYMER  
MAGAZINE, 5 ROUND



5133-1200-02ND  
CZ 455 / CZ 457 / CZ 512  
22 LR DURABLE POLYMER  
MAGAZINE, 10 ROUND



5073-1200-8802ND  
CZ 455 / CZ 457 / CZ 512  
22 WMR / 17 HMR DURABLE  
POLYMER MAGAZINE, 10 ROUND



5133-1200-01ND  
CZ 455 / CZ 457  
22 LR METAL MAGAZINE, 10 ROUND



5131-1001-02ND  
ONE ROUND MAGAZINE



5123-1225-03ND  
CZ 455 / CZ 457 / CZ 512  
22 LR DURABLE POLYMER  
MAGAZINE, 15 ROUND



5123-1225-02ND  
CZ 455 / CZ 457 / CZ 512  
22 LR DURABLE POLYMER  
MAGAZINE, 25 ROUND



D3900-0000  
CZ 4M RIMFIRE RIFLE BAG, BLACK,  
UNI SIZE



1070-7005  
CZ RIMFIRE RIFLESCOPE 3-9 x 42

**Lens Diameter:** 42 mm  
**Magnification:** 3-9x  
**Tube Diameter:** 1"  
**Reticle Focal Plane:** Reticle Focal Plane (Second Focal Plane (SFP))  
**Illumination Type:** No  
**Adjustment Click Value:** ¼ MOA  
**Parallax:** 50 m  
**Resistance to Weather Conditions:** Yes  
**Waterproof:** Yes

A compact riflescope with a one inch tube. Its impressive performance includes an industry-leading field of view, fast focus ocular and generous eye relief.

It features a proprietary coating process that maximizes light transmission through each optical element surface. As a result, it transmits over 92% of available light and maintains image clarity, even in low light conditions.

It also features a Double HD lens, created when multiple extra-low dispersion lenses are chemically laminated to minimize light reflection on the surface of multiple lenses, enhance resolution and color contrast of images, and minimize chromatic aberrations.



5083-9059-01ND  
CZ 457 DIOPTR ADAPTER RAIL



1070-7001  
CZ 455 / CZ 457 / CZ 512  
2-PIECE MOUNT, 1" DIAMETER

1070-7002  
CZ 455 / CZ 457 / CZ 512  
2-PIECE MOUNT, 30 MM DIAMETER



1070-7016  
SPUHR PLATE FOR MOUNTING  
TRIJICON RMR RED DOT SIGHTS

1070-7015  
SPUHR PLATE FOR MOUNTING  
DELTA POINT RED DOT SIGHTS



5083-9057-01ND  
CZ 457 PICATINNY RAIL, BLACK

5083-9025-01ND  
CZ 457 PICATINNY RAIL, 25 MOA, BLACK



## ACCESSORIES RIMFIRE RIFLES

5083-0096-8591V1ND  
CZ LRP 22 LR MINISET, 5 ROUND, 525 MM, 1/2 × 20



5083-0190-83V1ND  
CZ 457 JAGUAR 22 LR MINISET, 10 ROUND, 726 MM, 1/2 × 20

5083-0190-8982V1ND  
CZ 457 PREMIUM 17 HMR MINISET, 24" 1/2 × 20

5083-0190-82V1ND  
CZ 457 PREMIUM 22 LR MINISET, 24" 1/2 × 20

083-0190-8882V1ND  
CZ 457 PREMIUM 22 WMR MINISET, 24" 1/2 × 20



5083-0090-8991V1ND  
CZ 457 VARMINT 17 HMR MINISET, 5 ROUND, 525 MM, 1/2 × 20

5083-0090-8594V1ND  
CZ 457 VARMINT MTR 22 LR MATCH MINISET, 16" 1/2 × 20

5083-0090-8591V1ND  
CZ 457 VARMINT MTR 22 LR MATCH MINISET, 20" 1/2 × 20

5083-0090-91V1ND  
CZ 457 VARMINT 22 LR MINISET, 20" 1/2 × 20

5083-0090-8891V1ND  
CZ 457 VARMINT 22 WMR MINISET, 20" 1/2 × 20



5083-0090-8594V1ND  
CZ 457 MTR 22 LR MINISET, 5 ROUND, 525 MM, 1/2 × 20



5083-0190-8982V1ND  
CZ 457 AMERICAN 17 HMR MINISET, 5 ROUND, 630 MM, 1/2 × 20

5083-0090-8982V1ND  
CZ 457 AMERICAN 17 HMR MINISET, 24" 1/2 × 20

5083-0090-82V1ND  
CZ 457 AMERICAN 22 LR MINISET, 24" 1/2 × 20

5083-0090-8882V1ND  
CZ 457 AMERICAN 22 WMR MINISET, 24" 1/2 × 20



5083-0091-81V1ND  
CZ 457 STAINLESS 22 LR MINISET, 5 ROUND, 525 MM, 1/2 × 20



5120-0330-01  
CZ 457 RUBBER BOLT KNOB



5070-0070-11ND  
COMPENSATOR FOR 1/2 × 20 UNF THREAD  
(AMERICAN)

5070-0070-21ND  
COMPENSATOR FOR 1/2 × 20 UNF THREAD  
(VARMINT)



5080-0060-80ND  
1/2 × 20 UNF THREAD PROTECTOR  
(AMERICAN)

5080-0060-90ND  
1/2 × 20 UNF THREAD PROTECTOR  
(VARMINT)

C0307-0008  
SUPPRESSOR ECOI AU-ECO-1220  
22LR 1/2"×20

C0307-0009  
SUPPRESSOR ECOI AU-ECO-1228  
22LR 1/2"×28



A0310-0028  
LONG CLEANING ROD – CARBON  
FIBER Ø 5 L=910MM UNC 8-32



C0310-0000  
223 REM. CLEANING BRUSH SET



C0405-0000  
CZ 457 TRIGGER GUARD – BLACK

C0405-0001  
CZ 457 TRIGGER GUARD – GOLD

C0405-0002  
CZ 457 TRIGGER GUARD – GREEN

C0405-0003  
CZ 457 TRIGGER GUARD – RED

C0405-0004  
CZ 457 TRIGGER GUARD – BLUE



5120-0400  
CZ BASIC RIFLE BAG – BLACK



5120-0500  
CZ BASIC RIFLE BAG – FDE



**ACCESSORIES  
SEMI-AUTO**



A0103-0001  
INFORCE WML TACTICAL FLASHLIGHT, 400 LM, BLACK  
A0103-0001-0003  
INFORCE WML TACTICAL FLASHLIGHT, 400 LM, FDE  
A0103-0002  
INFORCE WML TACTICAL FLASHLIGHT, 400 LM, IR W-05-2  
A0203-0001  
INFORCE WMLX TACTICAL FLASHLIGHT, 800 LM, BLACK  
A0203-0002  
INFORCE WMLX TACTICAL FLASHLIGHT, 700 LM, IR



A0101-0010  
TRIJICON MRO RED DOT SIGHT, 39 MM, SCREW



A0105-0001  
CZ SCORPION EVO 3 FRONT HAND GUARD



A0203-0009  
SUREFIRE M600DF-BK FLASHLIGHT

A0203-0010  
SUREFIRE M312C-BK FLASHLIGHT

A0203-0012  
SUREFIRE M340 DFT PRO TURBO FLASHLIGHT

A0103-0018  
SUREFIRE 1000LM M640U-BK-PRO FLASHLIGHT



A0201-0003  
AIMPOINT COMP4 RED DOT SIGHT, SCREW



A0105-0002  
FRONT HAND GUARD FOR CZ SCORPION EVO 3, M-LOK



A0101-0027  
AIMPOINT MICRO H-2 LRP RED DOT SIGHT MOUNT 39 MM 200211



A0201-0004  
AIMPOINT MAGNIFICATION MODULE, 3x MAGNIFICATION



A0310-0007  
M-LOK DURAL RAIL, 5 SLOTS

A0310-0008  
M-LOK DURAL RAIL, 3 SLOTS

A0310-0019  
M-LOK DURAL RAIL, 9 SLOTS

A0310-0020  
M-LOK DURAL RAIL, 11 SLOTS

D3900-0300  
CZ BREN 2 TACTICAL BAG – BLACK

D3900-0600  
FOR CZ BREN 2 – FDE

D3800-0600  
FOR CZ SCORPION EVO 3 – FDE



A0210-0014  
AIM 50 TACTICAL DRAGBAG – GREEN

A0210-0013  
AIM 40 TACTICAL DRAGBAG – GREEN



A0212-0003  
CZ BREN 2, CZ SCORPION EVO 3 SET – STANDARD FPS DURAL SIGHTS

A0212-0004  
CZ BREN 2, CZ SCORPION EVO 3 SET – STANDARD FPS SAFETY SIGHTS

A0212-0005  
CZ BREN 2, CZ SCORPION EVO 3 SET – STANDARD FPS PLAST SIGHTS



A0210-0007  
SM-2001 MICRO MOUNT

A0210-0010  
SM-3002 MOUNT FOR TRIJICON MRO RED DOT SIGHT, ABSOLUTE



A0210-0012  
QDM-3001 MOUNT FOR TRIJICON MRO RED DOT SIGHT



3722-3500-7310ND  
CZ MAG 7,62 x 39, 10 ROUND



A0210-0002  
QD SLING SWIVEL 47 MM

A0310-0003  
QD SLING SWIVEL 25 MM



A0310-0006  
M-LOK QD MOUNT FOR SLING LOOP



D2800-0300  
1/2 POINT SLING FOR CZ BREN 2 – BLACK

D2800-0600  
1/2 POINT SLING FOR CZ BREN 2 – FDE



3722-3500-6501 ND  
CZ MAG 5,56 x 45, 30 ROUND

3722-3500-6503ND  
CZ MAG 5,56 x 45, 10 ROUND



A0106-0002  
CZ SCORPION EVO 3 MAG 22 LR, 10 ROUND



3662-0770-0725ND  
CZ SCORPION EVO 3 MAG 9 x 19, 20 ROUND

3662-0800-0715ND  
CZ SCORPION EVO 3 MAG 9 x 19, 10 ROUND

3662-0780-0735 ND  
CZ SCORPION EVO 3 MAG 9 x 19, 30 ROUND



A0107-0003M  
SUPPRESSOR FOR CZ SCORPION EVO 3, AU310-I-BC SL61 NORMAL 9 x 19 M18 x 1

A0107-0002M  
SUPPRESSOR FOR CZ SCORPION EVO 3, AU309-I-BC SL41 SHORT 9 x 19 M18 x 1



A0107-0009  
SUPPRESSOR FOR CZ SCORPION EVO 3 AU-ECO-18 x 1 ECO1 22LR M18 x 1



A0207-0017M  
SUPPRESSOR FOR CZ BREN 2, AU1601-BC DUAL556-SHORT (BL) A1 1/2 x 28

A0207-0012M  
SUPPRESSOR FOR CZ BREN 2, AU1301-BC DUAL556-NORMAL (BL) A1 1/2 x 28



# CZ CONFIGURATOR

*Build the firearm  
of your dreams*

Since 2019, Ceska zbrojovka a.s. has offered its customers an unrivalled opportunity to build a firearm in exact accordance with their wants and needs via an interactive website. You can choose the color of the frame and slide, type of sights (including red dot sights), size and color of the controls, magazine capacity and much more. After placing a binding order, the configured firearm is assembled and ready for final sale, which takes place in accordance with legal regulations.

The CZ Configurator is now available for CZ customers in seven countries around the world – Czech Republic, Slovakia, France, Germany, Poland, Austria and the USA.

Build the firearm of your dreams now!



[czconfigurator.com](http://czconfigurator.com)

Ceska zbrojovka a.s. is a member of **Colt CZ Group SE**

**COLT  
CZGROUP**





